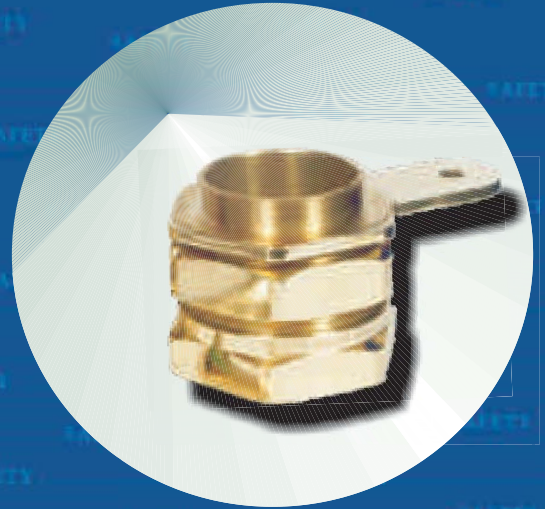


CABLE GLANDS



Marching towards safer future



INTRODUCTION



Jamnagar in India is known world-wide as "The Brass City". Ready availability of raw material, abundant labour and Jamnagar's casting -friendly weather have made the city, a heaven for manufacturers of brass components. It's here that **Biax Metals** has dedicated 30,000 square feet of manufacturing facilities. And devoted 20 years of professionalism for achieving specialization in Brass Electrical Components. Backed by regularly updated technology, state-of-the-art machinery and continuous research and development. With a present capacity of 1200 tones per annum, **Biax** manufactures more than 500 different types of Brass Components. [What's more, components as per your specifications can be developed, too.] The in-house extrusion plant helps the company to increase its production efficiency and execute your orders well in time. Besides implementing rigorous quality control at every stage, **Biax** infuses a very basic element of excellence in its entire range of products - A Love for Brass. Your search for perfection in brass components ends here.

(*Government approved Certificate of raw material and finished products available on request.)

A1 / A2 BRASS GLAND



A1 / A2 Brass Gland

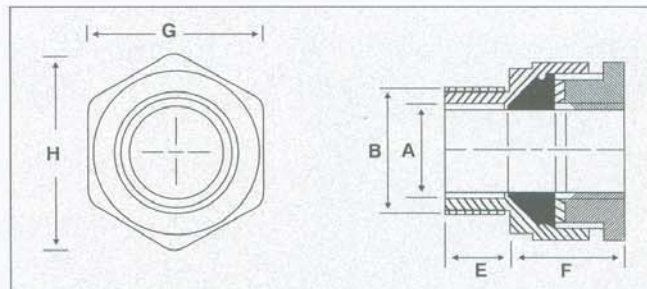
A1/A2 GLAND FOR UNARMoured CABLE

- To BS 6121 : Part 1
- Suitable for unarmoured, plastic or rubber sheathed cables
- Suitable for most indoor and outdoor applications
- Seal rated to IP66
- Finish : Natural Brass and also available in Electro Tinned and Nickel

A2 FLAMEPROOF FOR UNARMoured CABLE

As above but with these additional benefits :

- For use in Hazardous environments
- Complies with BS5501 Pt1 and Pt6
- A2F for flame proof increased safety applications
- Threads : Entry threads are metric to BS 3643 and are also available in imperial (ET)
- Also available in Aluminium (BS 1474) cable glands



ORDERING INFORMATION - CABLE AND GLAND DETAILS

COMP. NO.	SIZE	CABLE DIMENSIONS ACCOMODATED		GLAND DIMENSIONS				
		OVERALL DIAMETER A		ISO ENTRY THREAD		APPROX LENGTH FROM SHOULDER D mm	HEXAGON SIZE	
		MIN. mm	MAX. mm	DIA. B mm	LENGTH C mm		ACROSS FLATS E mm	ACROSS CORNERS F mm
BGA - 16	16	4.50	8.50	16	10	20.00	20.00	23.00
BGA - 20 S	20 S	8.00	11.50	20	10	22.00	22.00	25.00
BGA - 20	20	11.00	14.00	20	10	22.00	22.00	25.00
BGA - 25 S	25 S	14.00	17.50	25	10	25.00	30.00	34.00
BGA - 25	25	17.50	20.40	25	10	26.00	30.00	34.00
BGA - 32	32	20.00	26.00	32	10	30.00	36.00	40.00
BGA - 40 S	40 S	26.00	30.00	40	10	31.00	46.00	52.00
BGA - 40	40	30.00	33.00	40	15	31.00	46.00	52.00
BGA - 50 S	50 S	33.00	38.00	50	15	33.00	55.00	61.00
BGA - 50	50	38.00	44.00	50	15	33.00	56.00	62.00
BGA - 63 S	63 S	44.00	50.50	63	15	35.00	70.00	77.50
BGA - 63	63	50.50	56.00	63	15	35.00	70.00	77.50
BGA - 75 S	75 S	56.50	62.00	75	15	35.00	80.00	89.00
BGA - 75	75	62.00	68.00	75	15	40.00	80.00	89.00
BGA - 90	90	68.00	78.00	90	20	45.00	100.00	112.00
BGA - 100	100	78.00	88.00	100	20	45.00	112.00	125.00

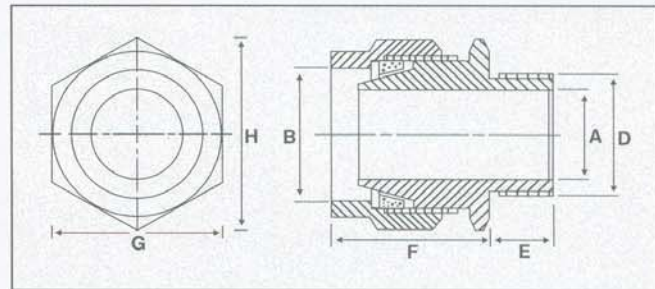
BW BRASS GLAND



BW BRASS GLAND

BW GLAND FOR SWA CABLE

- To BS 6121 : Part 1
- Suitable for single wire armoured, plastic or rubber sheathed cables
- Application - for use in dry, indoor situations
- Low cost two part design
- Shroud may be used for additional ingress protection
- IP 54
- Finish : Natural Brass and also available in Electro Tinned and Nickel
- Threads : Entry threads are metric to BS3643 and are also available in Imperial (ET)
- Also available in Aluminium (BS 1474) cable glands



ORDERING INFORMATION - CABLE AND GLAND DETAILS

Also available in CIEL (Cast Integral Earth Lug) For order Add suffix "C"

COMP. NO.	SIZE	CABLE DIMENSIONS ACCOMODATED			GLAND DIMENSIONS					
		DIAMETER		ARMOUR WIRE DIAMETER C mm	ISO ENTRY THREAD		APPROX LENGTH FROM SHOULDER F mm	HEXAGON SIZE		
		UNDER ARMOUR A MAX. mm	OVERALL B MAX. mm		DIA. D mm	LEN. E mm		ACROSS FLATS G mm	ACROSS CORNERS H mm	
BGB - 16	16	8.60	13.50	0.90	16	10	21.00	20.00	23.00	
BGB - 20 S	20 S	12.50	17.00	0.90 / 1.25	20	10	21.00	23.00	25.50	
BGB - 20	20	14.40	20.50	0.90 / 1.25	20	10	23.00	25.00	27.30	
BGB - 25 S	25 S	17.80	23.80	1.25 / 1.60	25	10	24.00	31.00	34.00	
BGB - 25	25	20.40	27.00	1.25 / 1.60	25	10	26.00	34.30	38.50	
BGB - 32	32	26.50	33.00	1.60 / 2.00	32	10	26.00	41.50	46.50	
BGB - 40 S	40 S	31.00	37.00	1.60 / 2.00	40	10	30.00	45.00	50.00	
BGB - 40	40	32.50	40.80	1.60 / 2.00	40	15	30.00	49.00	54.00	
BGB - 50 S	50 S	37.80	48.00	2.00 / 2.50	50	15	32.00	58.00	65.00	
BGB - 50	50	44.00	53.50	2.00 / 2.50	50	15	32.00	62.30	69.50	
BGB - 63 S	63 S	50.50	60.50	2.50	63	15	35.00	70.00	78.00	
BGB - 63	63	56.50	65.50	2.50	63	15	36.00	76.30	85.00	
BGB - 75 S	75 S	62.50	72.00	2.50	75	15	40.00	85.00	95.00	
BGB - 75	75	67.50	78.50	2.50 / 3.15	75	15	41.00	90.50	99.00	
BGB - 90	90	80.00	94.00	3.15	90	20	42.00	112.00	125.00	

CW BRASS GLAND



CW Brass Gland

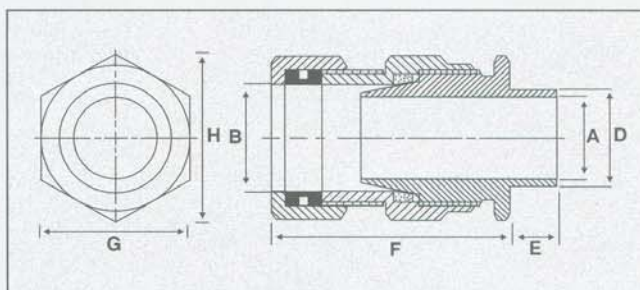
CW GLAND FOR SWA CABLE

- To BS 6121 : Pt 1
- Suitable for single wire armoured, plastic or rubber sheathed cables
- Outer seal grips sheath of cable
- For use in most climatic conditions weatherproof and waterproof
- Seal rated to IP 66
- Design has separate armour locking ring
- Gland rated to IP66 with use of suitable sealing washer or thread sealant at gland interface
- Finish : Natural Brass and also available in Electro Tinned and Nickel

CW FLAME PROOF GLAND FOR SWA CABLE

As above but with these additional benefits :

- For use in hazardous environments
- Complies with BS5501 Pt1 & Pt 6
- CW for flame proof increased safety application
- Threads : Entry threads are metric to BS3643 and are also available in Imperial (ET)
- Also available in Aluminium (BS 1474) cable glands



ORDERING INFORMATION - CABLE AND GLAND DETAILS

Also available in CIEL (Cast Integral Earth Lug) For order Add suffix "C"

COMP. NO.	SIZE	CABLE DIMENSIONS ACCOMODATED			GLAND DIMENSIONS					
		DIAMETER		ARMOUR WIRE DIAMETER C mm	ISO ENTRY THREAD		APPROX LENGTH FROM SHOULDER F mm	HEXAGON SIZE		
		UNDER ARMOUR A MAX. mm	OVERALL B MAX. mm		DIA. D mm	LEN. E mm		ACROSS FLATS G mm	ACROSS CORNERS H mm	
BGC - 16	16	8.60	13.50	0.90	16	10	40.00	20.00	23.00	
BGC - 20 S	20 S	12.50	17.00	0.90 / 1.25	20	10	42.00	24.00	28.00	
BGC - 20	20	14.40	20.50	0.90 / 1.25	20	10	42.00	27.00	31.00	
BGC - 25 S	25 S	17.80	23.80	1.25 / 1.60	25	10	44.00	31.00	34.00	
BGC - 25	25	20.40	27.00	1.25 / 1.60	25	10	45.00	34.30	38.50	
BGC - 32	32	26.50	33.00	1.60 / 2.00	32	10	50.00	41.50	46.50	
BGC - 40 S	40 S	31.00	37.00	1.60 / 2.00	40	10	51.00	45.00	50.00	
BGC - 40	40	32.50	40.80	1.60 / 2.00	40	15	51.00	49.00	54.00	
BGC - 50 S	50 S	37.80	48.00	2.00 / 2.50	50	15	55.00	58.00	65.00	
BGC - 50	50	44.00	53.50	2.00 / 2.50	50	15	55.00	62.30	69.50	
BGC - 63 S	63 S	50.50	60.50	2.50	63	15	59.00	70.00	78.00	
BGC - 63	63	56.50	65.50	2.50	63	15	59.00	76.30	85.00	
BGC - 75 S	75 S	62.50	72.00	2.50	75	15	64.00	85.00	95.00	
BGC - 75	75	67.50	78.50	2.50 / 3.15	75	15	65.00	90.50	99.00	
BGC - 90	90	80.00	94.00	3.15	90	20	75.00	112.00	125.00	

E1W BRASS GLAND



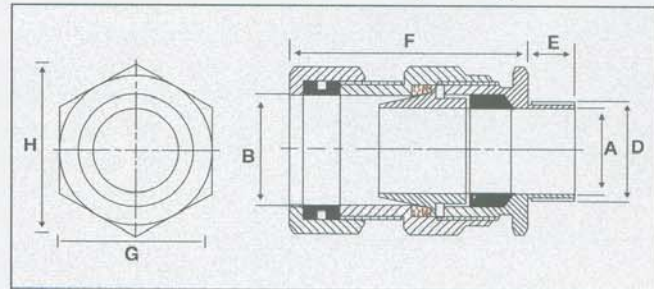
E1W Brass Gland

E1W GLAND FOR SWA CABLE

- Suitable for single wire armoured, plastic or rubber sheathed, extruded bedded cables
- Outer seal grips sheath of cable
- Inner seal grips bedding layer of cable
- For use in most climatic conditions weatherproof and waterproof
- Inner and outer seal rated to IP 66
- Design has separate armour locking ring
- Gland rated to IP66 with use of suitable washer or thread sealant at gland interface
- Finish : Natural Brass and also available in Electro Tinned and Nickel

E1W FLAME PROOF GLAND FOR SWA CABLE

- For use in hazardous environments
- Complies with BS5501 Pt1 & Pt6
- E1W increased safety application
- Threads : Entry threads are metric to BS3643 and are also available in Imperial (ET)
- Also available in Aluminium (BS 1474) cable glands



ORDERING INFORMATION - CABLE AND GLAND DETAILS

COMP. NO.	SIZE	CABLE DIMENSIONS ACCOMODATED			GLAND DIMENSIONS				
		DIAMETER		ARMOUR WIRE DIAMETER C	ISO ENTRY THREAD		APPROX LENGTH FROM SHOULDER F	HEXAGON SIZE	
		UNDER ARMOUR A MAX. mm	OVERALL B MAX. mm		DIA. D	LEN. E		ACROSS FLATS G	ACROSS CORNERS H
BGE - 16	16	8.60	13.50	0.90	16	10	40.00	20.00	23.00
BGE - 20 S	20 S	12.50	17.00	0.90 / 1.25	20	10	42.00	24.00	28.00
BGE - 20	20	14.40	20.50	0.90 / 1.25	20	10	42.00	27.00	31.00
BGE - 25 S	25 S	17.80	23.80	1.25 / 1.60	25	10	44.00	31.00	34.00
BGE - 25	25	20.40	27.00	1.25 / 1.60	25	10	45.00	34.30	38.50
BGE - 32	32	26.50	33.00	1.60 / 2.00	32	10	50.00	41.50	46.50
BGE - 40 S	40 S	31.00	37.00	1.60 / 2.00	40	10	51.00	45.00	50.00
BGE - 40	40	32.50	40.80	1.60 / 2.00	40	15	51.00	49.00	54.00
BGE - 50 S	50 S	37.80	48.00	2.00 / 2.50	50	15	55.00	58.00	65.00
BGE - 50	50	44.00	53.50	2.00 / 2.50	50	15	55.00	62.30	69.50
BGE - 63 S	63 S	50.50	60.50	2.50	63	15	59.00	70.00	78.00
BGE - 63	63	56.50	65.50	2.50	63	15	59.00	76.30	85.00
BGE - 75 S	75 S	62.50	72.00	2.50	75	15	64.00	85.00	95.00
BGE - 75	75	67.50	78.50	2.50 / 3.15	75	15	65.00	90.50	99.00
BGE - 90	90	80.00	94.00	3.15	90	20	75.00	112.00	125.00

SPECIAL TYPE GLANDS

Special Type Glands

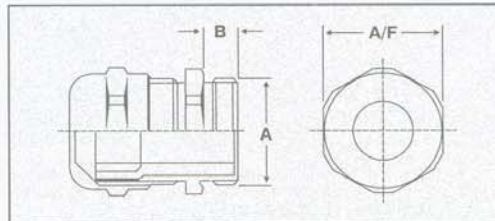
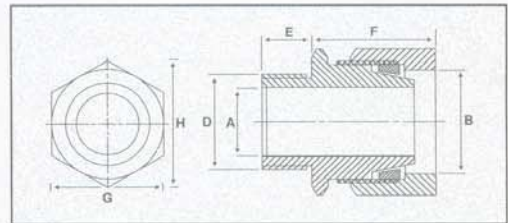
'G' TYPE GLAND FOR SWA CABLE

- For use with SWA, Plastic & Rubber sheathed cables
- Used in dry indoor conditions
- Inner ring ensures positive armour clamp and earth continuity
- Finish : Natural Brass and also available in Electro Tinned and Nickel
- Threads : Entry threads are metric to BS 3643 and are also available in imperial (ET)
- Also available in Aluminium (BS 1474) cable glands



'U' TYPE GLAND FOR SWA CABLE

- Features : IP68 rating, Strain relief, 8 Gland size to cover full cable range
- Application : Application is simple, no need to disassemble the gland. Just pass the cable through the assembled gland and tighten gland nut. The perfect gland for unarmoured PVC, XLPE and other synthetic cables.
- Threads : Metric and PG
- Finish : Nickel plated brass
- User Benefits : Fully insulated by plastic insert. Incorporates a unique 'camera shutters' principle, which protects the cable. Neoprens seal for fluid tightness.



ORDERING INFORMATION

'G' TYPE - CABLE AND GLAND DETAILS

COMP. NO.	SIZE	CABLE DIMENSIONS ACCOMODATED					GLAND DIMENSIONS			
		DIAMETER		ARMOUR WIRE DIAMETER C mm	ISO ENTRY THREAD DIA. LEN. D E mm mm		APPROX LEN. FROM SHOULDER F mm	HEXAGON SIZE ACROSS FLATS ACROSS G H mm mm		
		UNDER ARM. A MIN. mm	OVER ALL B MAX. mm							
BGG - 204	G-204	-	15.8	15.8	0.9 / 1.25	20	10	24	22.00	24.9
BGG - 206	G-206	-	21.0	21.0	0.9 / 1.25	20	10	25	27.00	30.0
BGG - 254	G-254	-	23.8	23.8	1.25 / 1.60	25	10	26	31.7	35.7
BGG - 256	G-256	-	27.2	27.2	1.25 / 1.60	25	10	26	37.6	42.2
BGG - 324	G-324	-	33.2	33.2	1.60 / 2.0	32	10	28	47.3	53.6
BGG - 326	G-326	-	39.2	39.2	1.60 / 2.0	40	15	25	48.4	54.6
BGG - 405	G-405	-	39.9	39.9	1.60 / 2.0	40	15	25	50.0	57.0
BGG - 503	G-503	-	51.6	51.6	2.0 / 2.25	50	15	36	58.0	64.2
BGG - 505	G-505	-	52.6	52.6	2.0 / 2.25	50	15	36	65.0	71.2
BGG - 636	G-636	-	61.0	61.0	2.5	63	15	30	71.0	77.5
BGG - 753	G-753	-	71.3	71.3	2.5	75	15	40	85.0	95.0
BGG - 755	G-755	-	78.0	78.0	2.5	75	15	40	98.0	109.2

'U' TYPE - CABLE AND GLAND DETAILS

COMP. NO.	MOUN TING DIA. A mm	THREAD LENG. B mm	MIN. CABLE RANGE mm	MAX. CABLE RANGE mm	WIDTH A/F mm
BU12	12	5	3	6	14
BU16	16	5	5	10	17
BU20	20	6	8	13	22
BU25	25	7	11	17	27
BU32	32	8	15	21	34
BU40	40	8	19	28	43
BU50	50	9	26	35	55
BU63	63	10	32	42	65

CABLE GLAND KITS & ACCESSORIES



Cable Gland Kits & Accessories

GLAND KITS

- Convenient, ready to use kits
- Contains all that is necessary for terminating a cable run-gland(s), backnut(s), earth tag(s) and shroud (s)
- Helps to keep all parts for each termination together
- Easier to stock than loose pieces

ACCESSORIES

- Earth tags are available from sizes 16mm to 88mm in both Brass and Aluminium
- Earth tags ensure earth continuity between the electrical equipment and gland
- Locknuts are available in entry thread from size 16mm to 85mm in Brass, Aluminium and Galvanised steel
- PVC shrouds are denoted by gland reference number and are compatible with each gland size.

ORDERING INFORMATION - CABLE AND GLAND DETAILS

BW GLAND REFERENCE			CW GLAND REFERENCE		
COMP. NO.	SIZE	ITEMS PER KIT	COMP. NO.	SIZE	ITEMS PER KIT
BGB - 20 S	20 S	2	BGC - 20 SS	20 SS	2
BGB - 20	20	2	BGC - 20 S	20 S	2
BGB - 25	25	2	BGC - 20	20	2
BGB - 32	32	1	BGC - 25	25	2
BGB - 40	40	1	BGC - 32	32	1
BGB - 50	50	1	BGC - 40	40	1
BGB - 63	63	1	BGC - 50	50	1
BGB - 75	75	1	BGC - 63	63	1
			BGC - 75	75	1

MISCELLANEOUS



Miscellaneous

Tinned Copper Cable Terminal ends (Lugs)

Material : 99.99 % electrolytic copper
 Finish : Tinned Plated
 Sizes : Available Sizes from 1.5mm sq. to 1200mm sq.

Tinned Copper Cable Connectors, Sleeves, Links, Ferrules and Weak ferrules

Material : 99.99% electrolytic copper
 Finish : Tinned Plated
 Sizes : Available Sizes from 1.5mm sq. to 1200mm sq.

Brass Overhead Line Fittings :

Split Bolt Connector (Line Taps)

Material : Brass to BS 2874. Also in Copper.
 Finish : Natural Brass and Electro Tinned
 Sizes : Available Sizes from 1.5mm sq. to 1200mm sq.

Brass Builders Hardware :

Material : Brass
 Finish : Gold plated duly lacquered
 Items : Door handle / stopper, knobs, curtain - ends, hinger, door knocker etc.

Earth Clamps for Pipe Fittings :

Biax earthing clamp meets the required requirements of B5 951

Features : Biax earthing clamps are :

- Easily adapted to conductor sizes up to 70 mm².
- Manufactured by automatic assembly provide consistent, high quality products.

Sizes : BEC-14, BEC-14/1, BEC-14/2.

INGRESS PROTECTION INDEXES

Protection against solids

- 1) IP
- 2) X
- 3) 0
- 1 Protected against solid bodies larger than 50mm. (e.g. accidental contact with the hand)
- 2 Protected against solid bodies larger than 12mm (e.g. finger of the hand)
- 3 Protected against solid bodies larger than 2.5mm (e.g. tools, wires)
- 4 Protected against solid bodies larger than 1 mm (e.g. fine tools & small wire)
- 5 Protected against dust (no harmful deposit)
- 6 Completely protected against dust

Protection against liquids

- 1) IP
- 2) X
- 3) 0
- 1 Protected against vertically falling drops of water. (condensation)
- 2 Protected against drops of water falling at up to 15° from the vertical.
- 3 Protected against drops of rain water at up to 60° from the vertical.
- 4 Protected against projections of water from all directions.
- 5 Protected against jets of water from all directions.
- 6 Protected against the effects of immersion.
- 7 Protected against the effects of submersion.

Gland Selection Chart

The gland sizes recommended are in accordance with calculations based on cables manufactured to BS 6346 (1969) and **Biax** cannot accept any responsibility for cables that prove to deviate materially from the nominal diameters quoted in BS 6346 (1969)

CABLE SPECIFICATION				CABLE GLAND SPECIFICATION						
CONDUCTOR AREA mm	NUMBER OF CORES	NOMINAL DIAMETER		ENTRY THREAD mm	INDOOR BW	OUTDOOR CW	OUTDOOR E1W	OUTDOOR CIEL CW	INDOOR CIEL BW	
		UNDER ARMOUR mm	OVER ALL mm							
1.5	2	8.1	12.5	16	16	16	16	16	16	
	3	8.6	13.0	16	16	16	16	16	16	
	4	9.4	14.0	20	20 S	20 S	20 S	20 S	20 S	
	7	11.3	15.9	20	20 S	20 S	20 S	20 S	20 S	
	12	14.7	20.2	20	20	20	20	20	20	
	19	17.5	23.2	25	25 S	25 S	25 S	25 S	25 S	
	27	21.3	27.0	25	25	25	25	25	25	
2.5	37	23.8	30.6	32	32	32	32	32	32	
	2	9.0	13.6	20	20 S	20 S	20 S	20 S	20 S	
	3	9.5	14.0	20	20 S	20 S	20 S	20 S	20 S	
	4	10.4	15.0	20	20 S	20 S	20 S	20 S	20 S	
	7	12.5	17.0	20	20	20	20	20	20	
	12	16.7	22.4	25	25 S	25 S	25 S	25 S	25 S	
	19	20.0	26.6	25	25	25	25	25	25	
4	27	23.9	30.7	32	32	32	32	32	32	
	37	27.0	33.8	40	40 S	40 S	40 S	40 S	40 S	
	2	10.1	14.7	20	20 S	20 S	20 S	20 S	20 S	
	3	10.7	15.3	20	20 S	20 S	20 S	20 S	20 S	
	4	11.8	16.4	20	20 S	20 S	20 S	20 S	20 S	
	6	2	11.3	15.9	20	20 S	20 S	20 S	20 S	20 S
		3	12.0	16.6	20	20	20	20	20	20
4		13.2	18.7	20	20	20	20	20	20	
10	2	13.2	18.0	20	20	20	20	20	20	
	3	14.0	19.5	20	20	20	20	20	20	
	4	15.6	21.1	25	25 S	25 S	25 S	25 S	25 S	
16	2	14.5	20.0	20	20	20	20	20	20	
	3	15.5	21.2	25	25 S	25 S	25 S	25 S	25 S	
	4	17.2	22.9	25	25 S	25 S	25 S	25 S	25 S	
25	2	18.4	24.1	25	25	25	25	25	25	
	3	20.1	26.7	25	25	25	25	25	25	
	4	22.3	28.9	32	32	32	32	32	32	
35	2	21.3	27.9	32	32	32	32	32	32	
	3	22.8	29.6	32	32	32	32	32	32	
	4	25.3	32.1	32	32	32	32	32	32	
50	1	13.6	19.1	20	20	20	20	20	20	
	2	19.0	25.8	25	25	25	25	25	25	
	3	21.7	28.5	32	32	32	32	32	32	
	4	25.0	32.0	32	32	32	32	32	32	
70	1	15.4	21.1	25	25 S	25 S	25 S	25 S	25 S	
	2	22.0	29.0	32	32	32	32	32	32	
	3	25.2	32.2	32	32	32	32	32	32	
	4	29.5	37.7	40	40 S	40 S	40 S	40 S	40 S	
95	1	17.7	23.4	25	25 S	25 S	25 S	25 S	25 S	
	2	25.1	33.1	32	32	32	32	32	32	
	3	28.8	37.0	40	40 S	40 S	40 S	40 S	40 S	
	4	33.3	41.7	50	50 S	50 S	50 S	50 S	50 S	
120	1	19.7	26.3	25	25 S	25 S	25 S	25 S	25 S	
	2	27.9	36.1	40	40 S	40 S	40 S	40 S	40 S	
	3	32.0	40.4	40	40	40	40	40	40	
	4	37.5	47.1	50	50 S	50 S	50 S	50 S	50 S	
150	1	21.7	28.3	32	32	32	32	32	32	
	2	30.9	39.3	40	40	40	40	40	40	
	3	35.9	45.5	50	50 S	50 S	50 S	50 S	50 S	
	4	41.6	51.4	50	50	50	50	50	50	
185	1	24.0	30.8	32	32	32	32	32	32	
	2	34.9	44.7	50	50 S	50 S	50 S	50 S	50 S	
	3	40.0	49.8	50	50	50	50	50	50	
	4	46.4	56.6	63	63 S	63 S	63 S	63 S	63 S	
240	1	27.1	34.1	40	40 S	40 S	40 S	40 S	40 S	
	2	39.0	49.0	50	50	50	50	50	50	
	3	44.9	55.1	63	63 S	63 S	63 S	63 S	63 S	
	4	52.6	63.0	63	63	63	63	63	63	
300	1	30.0	37.0	40	40 S	40 S	40 S	40 S	40 S	
	2	43.8	53.5	50	50	50	50	50	50	
	3	49.8	60.2	63	63 S	63 S	63 S	63 S	63 S	
	4	58.0	68.8	75	75 S	75 S	75 S	75 S	75 S	
400	1	33.8	42.0	50	50 S	50 S	50 S	50 S	50 S	
	2	48.4	59.0	63	63 S	63 S	63 S	63 S	63 S	
	3	55.8	66.6	63	63	63	63	63	63	
	4	65.4	78.1	75	75	75	75	75	75	
500	1	37.4	45.6	50	50 S	50 S	50 S	50 S		
630	1	41.3	49.7	50	50	50	50	50		
800	1	46.0	55.8	63	63 S	63 S	63 S	63 S		
1000	1	56.0	61.0	63	63	63	63	63		

CABLE LUGS



Marching towards safer future **BIAx**



NO.	INDEX / CONTENTS.	PAGE	PRODUCT CODE.
1.	COPPER CRIMPING TYPE TUBULAR CABLE TERMINAL ENDS.	3/4	BEG
2.	CRIMPING TYPE COPPER TUBULAR CABLE TERMINAL ENDS-BELL MOUTH.	5/6	BBE
3.	TINNED COPPER TUBULAR CABLE LUGS WITHOUT INSPECTION HOLE.	7	BNL
4.	LONG BARREL TINNED COPPER CABLE TERMINAL ENDS.	8	BTL
5.	SOLDER LUGS.	8	BA
6.	COPPER CRIMPING TYPE TUBULAR CABLE TERMINAL ENDS - SUITABLE FOR AMERICAN WIRE GAUGE	9/10	BE
7.	TUBULAR COMPRESSION CABLE LUGS.	11/12	BUTD
8.	COMPRESSION CABLE LUGS WITH 2 HOLES	13	BTH
9.	COMPRESSION CABLE LUGS FOR TRANSFORMER	13	BT
10.	CRIMPING TYPE COPPER TUBULAR IN-LINE CONNECTORS (LINKS). * LONG BARREL CONNECTORS * BUTT TYPE CONNECTORS * SHORT BARREL CONNECTORS	14 14 14	BLB BBC BSB
11.	TUBULAR CABLE LUGS WITH INSULATION	15	BTI
12.	HEAVY DUTY LUGS FOR COMPACTED XLPE CABLE.	16	B
13.	COPPER CONNECTORS WITH SOLID BARRIER.	16	BS
14.	COMPRESSION FULL TENSION SLEEVE	17	BCT
15.	STRAIGHT SPLICE FOR MEDIUM VOLTAGE CABLES.	17	BNC
16.	COPPER END SEALING FERRULES.	18	BSF
17.	TUBULAR PLASTIC END SLEEVES.	19	BSFI
18.	SOLDERING TYPE COPPER WEAK BACK FERRULES.	20	BWB
19.	TINNED SCREW SLEEVES.	20	BTBSS
20.	PUNCHED COPPER CABLE LUGS BOLTED WITH 4 SCREWS.	21	BPS
21.	COMPRESSION JOINTS.	21	BCOT
22.	ALUMINIUM COMPRESSION JOINTS.	22	BAFT
23.	TINNED ALUMINIUM CABLE TERMINAL ENDS.	22	BTAT
24.	TINNED ALUMINIUM CABLE CONNECTORS / LINKS.	23	BTAC
25.	ALUMINIUM SLEEVES FOR LOW / HALF VOLTAGE SPLICING OF ALUMINIUM CABLES	23	BASS

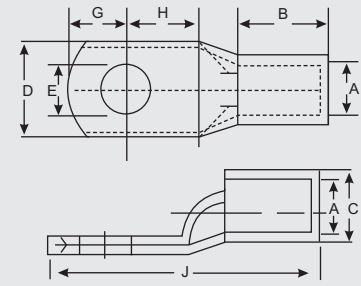
NO.	INDEX / CONTENTS.	PAGE	PRODUCT CODE.
26.	ALUMINIUM SPLICE FOR LV & MV (UPTO 30 KV), FOR SIMILAR CABLE CROSS SECTIONAL AREAS.	24	BASC
27.	ALUMINIUM SPLICE FOR LV & MV (UPTO 30 KV), FOR DISSIMILAR CABLE CROSS SECTIONAL AREAS.	25	BADC
28.	ALUMINIUM CONNECTORS FOR TERMINATION OF 2,3 AND 4 CORE SECTOR SHAPED CABLES.	26	BASSC
29.	STRAIGHT TERMINALS / LUGS FOR TERMINATION OF 2,3 AND 4 CORE SECTOR SHAPED CABLES	26	BASST
30.	RING TYPE TINNED COPPER CABLE TERMINAL ENDS	27/28/29	BR
31.	RING TYPE INSULATED TINNED COPPER CABLE TERMINAL ENDS	30	BRI
32.	FORK TYPE TINNED COPPER CABLE TERMINAL ENDS	31	BF
33.	FORK TYPE INSULATED TINNED COPPER CABLE TERMINAL ENDS	31	BFI
34.	PIN TYPE TINNED COPPER CABLE TERMINAL ENDS	32	BP
35.	PIN TYPE INSULATED TINNED COPPER CABLE TERMINAL ENDS	32	BPI
36.	COPPER REDUCER TYPE TERMINAL ENDS	33	BPC
37.	BUTT CONNECTORS	33	BTIC
38.	COPPER MECHANICAL LUGS	34	BUL

NOTE : BIAX ELECTRIC & CONTROLS PVT. LTD. reserves the right to introduce changes in design of the product & material for the purpose of technical progress or in case of the standard being altered, without any prior notice.

COPPER CRIMPING TYPE TUBULAR CABLE TERMINAL ENDS

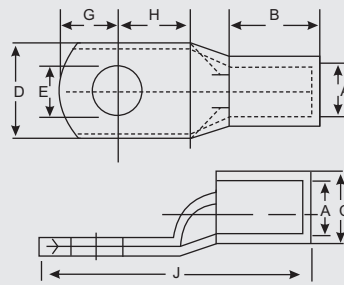
MATERIAL : ELECTROLYTIC COPPER

FINISH : ELECTRO TINNED



CABLE MM ²	STUD Ø E	DIMENSIONS (MM)							PROD. CODE
		A	C	D	G	H	B	J	
1.5	4.2	1.8	3.7	8	4	5	5	16	BEG 1.5 - 4
	5.2	1.8	3.7	8	4	5	5	16	BEG 1.5 - 5
	6.5	1.8	3.7	10	4	5	5	18	BEG 1.5 - 6
2.5	4.2	2.4	4	8	5	6	7	18	BEG 2.5 - 4
	5.2	2.4	4	10	5	6	7	20	BEG 2.5 - 5
	6.5	2.4	4	10	5	6	7	20	BEG 2.5 - 6
	8.4	2.4	4	9	7	8	7	24	BEG 2.5 - 8
4	4.2	3.1	4.8	10	5	6	7	20	BEG 4 - 4
	5.2	3.1	4.8	10	5	6	7	20	BEG 4 - 5
	6.5	3.1	4.8	10	5	6	7	20	BEG 4 - 6
	8.2	3.1	4.8	12	7	8	7	24	BEG 4 - 8
6	5.2	3.8	5.5	10	5	6	9	23	BEG 6 - 5
	6.5	3.8	5.5	10	5	6	9	23	BEG 6 - 6
	8.4	3.8	5.5	12	6	9	9	27	BEG 6 - 8
	10.5	3.8	5.5	15	9	11	9	32	BEG 6 - 10
10	6.5	4.5	6.2	12	6	7	9	25	BEG 10 - 6
	8.4	4.5	6.2	12	6	9	9	27	BEG 10 - 8
	10.5	4.5	6.2	15	9	11	9	32	BEG 10 - 10
16	6.5	5.4	7.1	12	7	7	12	30	BEG 16 - 6
	8.4	5.4	7.1	12	7	7	12	30	BEG 16 - 8
	10.5	5.4	7.1	15	9	11	12	36	BEG 16 - 10
	13	5.4	7.1	18	10	12	12	38	BEG 16 - 12
20	8.4	6	7.7	12	7	9	12	32	BEG 20 - 8
25	6.5	6.8	8.8	13	7	7	12	30	BEG 25 - 6
	8.4	6.8	8.8	16	7	7	12	30	BEG 25 - 8
	10.5	6.8	8.8	18	10	11	12	37	BEG 25 - 10
	13	6.8	8.8	18	10	11	12	37	BEG 25 - 12
35	6.5	8.2	10.6	15.3	9	9	12	35	BEG 35 - 6
	8.4	8.2	10.6	15.3	9	9	12	35	BEG 35 - 8
	10.5	8.2	10.6	18	10	11	12	38	BEG 35 - 10
	13	8.2	10.6	20	12	13	15	43	BEG 35 - 12
	17	8.2	10.6	20	12	13	15	43	BEG 35 - 16
50	8.4	9.5	12.4	17.8	10	11	16	43	BEG 50 - 8
	10.5	9.5	12.4	17.8	10	11	16	43	BEG 50 - 10
	13	9.5	12.4	18	10	11	16	43	BEG 50 - 12
	17	9.5	12.4	20	12	13	16	47	BEG 50 - 16
70	8.4	11.2	14.7	21	12	13	18	50	BEG 70 - 8
	10.5	11.2	14.7	21	12	13	18	50	BEG 70 - 10
	13	11.2	14.7	21	12	13	18	50	BEG 70 - 12
	14.7	11.2	14.7	28	16	16	18	57	BEG 70 - 14
	17	11.2	14.7	28	16	16	18	57	BEG 70 - 16

**COPPER CRIMPING TYPE
TUBULAR CABLE TERMINAL ENDS**



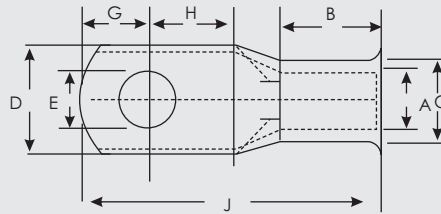
CABLE MM ²	STUD Ø E	DIMENSIONS (MM)							PROD. CODE
		A	C	D	G	H	B	J	
95	10.5	13.5	17.4	25	13	13	20	55	BEG 95 - 10
	13	13.5	17.4	25	13	13	20	55	BEG 95 - 12
	14.7	13.5	17.4	28	13	13	20	55	BEG 95 - 14
	17	13.5	17.4	28	16	16	20	61	BEG 95 - 16
120	13	15	19.4	28	14	14	22	60	BEG 120 - 12
	14.7	15	19.4	28	16	16	22	64	BEG 120 - 14
	17	15	19.4	28	16	16	22	64	BEG 120 - 16
150	13	16.5	21.2	30	16	16	26	69	BEG 150 - 12
	14.7	16.5	21.2	30	16	16	26	69	BEG 150 - 14
	17	16.5	21.2	30	16	16	26	69	BEG 150 - 16
	21	16.5	21.2	30	19	23	26	79	BEG 150 - 20
185	13	18.5	23.5	34	17	17	32	78	BEG 185 - 12
	14.7	18.5	23.5	34	17	17	32	78	BEG 185 - 14
	17	18.5	23.5	34	17	17	32	78	BEG 185 - 16
	21	18.5	23.5	34	17	17	32	78	BEG 185 - 20
240	13	21	26.5	38	20	20	38	92	BEG 240 - 12
	14.7	21	26.5	38	20	20	38	92	BEG 240 - 14
	17	21	26.5	38	20	20	38	92	BEG 240 - 16
	21	21	26.5	38	20	20	38	92	BEG 240 - 20
	BL	21	26.5	38	-	-	38	92	BEG 240 - BL
300	13	23.5	30	43	22	22	42	101	BEG 300 - 12
	14.7	23.5	30	43	22	22	42	101	BEG 300 - 14
	17	23.5	30	43	22	22	42	101	BEG 300 - 16
	21	23.5	30	43	22	22	42	101	BEG 300 - 20
	BL	23.5	30	43	-	-	42	101	BTD 300 - BL
400	13	28.5	36.5	50	26	26	44	114	BEG 400 - 12
	14.7	28.5	36.5	50	26	26	44	114	BEG 400 - 14
	17	28.5	36.5	50	26	26	44	114	BEG 400 - 16
	21	28.5	36.5	50	26	26	44	114	BEG 400 - 20
	BL	28.5	36.5	50	-	-	44	114	BEG 400 - BL
500	17	30	39	56	28	28	48	124	BEG 500 - 16
	21	30	39	56	28	28	48	124	BEG 500 - 20
	BL	30	39	56	-	-	48	124	BEG 500 - BL
630	17	35	45	65	33	33	56	144	BEG 630 - 16
	21	35	45	65	33	33	56	144	BEG 630 - 20
	BL	35	45	65	-	-	56	144	BEG 630 - BL
*630	16	35	41	62	33	33	56	144	BEGL 630 - 16
*630	20	35	41	62	33	33	56	144	BEGL 630 - 20
800	BL	39	50.6	73.5	-	-	78	170	BEG 800 - BL
1000	BL	43	56.2	81	-	-	90	200	BEG 1000 - BL

*(SPECIAL) LIGHT DUTY - BEGL

CRIMPING TYPE COPPER TUBULAR CABLE TERMINAL ENDS - BELL MOUTH

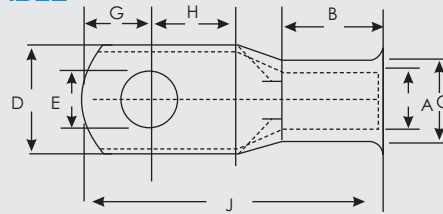
MATERIAL : ELECTROLYTIC COPPER

FINISH : ELECTRO TINNED



CABLE MM ²	STUD Ø E	DIMENSIONS (MM)							PROD. CODE
		A	C	D	G	H	B	J	
1.5	4.2	1.8	3.7	8	4	5	5	16	BBE 1.5 - 4
	5.2	1.8	3.7	8	4	5	5	16	BBE 1.5 - 5
	6.5	1.8	3.7	10	4	5	5	18	BBE 1.5 - 6
2.5	4.2	2.4	4	8	5	6	7	18	BBE 2.5 - 4
	5.2	2.4	4	10	5	6	7	20	BBE 2.5 - 5
	6.5	2.4	4	10	5	6	7	20	BBE 2.5 - 6
	8.4	2.4	4	9	7	8	7	24	BBE 2.5 - 8
4	4.2	3.1	4.8	10	5	6	7	20	BBE 4 - 4
	5.2	3.1	4.8	10	5	6	7	20	BBE 4 - 5
	6.5	3.1	4.8	10	5	6	7	20	BBE 4 - 6
	8.2	3.1	4.8	12	7	8	7	24	BBE 4 - 8
6	5.2	3.8	5.5	10	5	6	9	23	BBE 6 - 5
	6.5	3.8	5.5	10	5	6	9	23	BBE 6 - 6
	8.4	3.8	5.5	12	6	9	9	27	BBE 6 - 8
	10.5	3.8	5.5	15	9	11	9	32	BBE 6 - 10
10	6.5	4.5	6.2	12	6	7	9	25	BBE 10 - 6
	8.4	4.5	6.2	12	6	9	9	27	BBE 10 - 8
	10.5	4.5	6.2	15	9	11	9	32	BBE 10 - 10
16	6.5	5.4	7.1	12	7	7	12	30	BBE 16 - 6
	8.4	5.4	7.1	12	7	7	12	30	BBE 16 - 8
	10.5	5.4	7.1	15	9	11	12	36	BBE 16 - 10
	13	5.4	7.1	18	10	12	12	38	BBE 16 - 12
20	8.4	6	7.7	12	7	9	12	32	BBE 20 - 8
25	6.5	6.8	8.8	13	7	7	12	30	BBE 25 - 6
	8.4	6.8	8.8	16	7	7	12	30	BBE 25 - 8
	10.5	6.8	8.8	18	10	11	12	37	BBE 25 - 10
	13	6.8	8.8	18	10	11	12	37	BBE 25 - 12
35	6.5	8.2	10.6	15.3	9	9	12	35	BBE 35 - 6
	8.4	8.2	10.6	15.3	9	9	12	35	BBE 35 - 8
	10.5	8.2	10.6	18	10	11	12	38	BBE 35 - 10
	13	8.2	10.6	20	12	13	15	43	BBE 35 - 12
	17	8.2	10.6	20	12	13	15	43	BBE 35 - 16
50	8.4	9.5	12.4	17.8	10	11	16	43	BBE 50 - 8
	10.5	9.5	12.4	17.8	10	11	16	43	BBE 50 - 10
	13	9.5	12.4	18	10	11	16	43	BBE 50 - 12
	17	9.5	12.4	20	12	13	16	47	BBE 50 - 16
70	8.4	11.2	14.7	21	12	13	18	50	BBE 70 - 8
	10.5	11.2	14.7	21	12	13	18	50	BBE 70 - 10
	13	11.2	14.7	21	12	13	18	50	BBE 70 - 12
	14.7	11.2	14.7	28	16	16	18	57	BBE 70 - 14
	17	11.2	14.7	28	16	16	18	57	BBE 70 - 16

**CRIMPING TYPE COPPER TUBULAR CABLE
TERMINAL ENDS - BELL MOUTH**



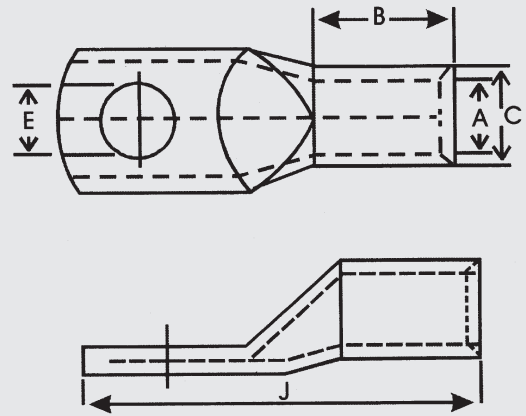
CABLE MM ²	STUD Ø E	DIMENSIONS (MM)							PROD. CODE
		A	C	D	G	H	B	J	
95	10.5	13.5	17.4	25	13	13	20	55	BBE 95 - 10
	13	13.5	17.4	25	13	13	20	55	BBE 95 - 12
	14.7	13.5	17.4	28	13	13	20	55	BBE 95 - 14
	17	13.5	17.4	28	16	16	20	61	BBE 95 - 16
120	13	15	19.4	28	14	14	22	60	BBE 120 - 12
	14.7	15	19.4	28	16	16	22	64	BBE 120 - 14
	17	15	19.4	28	16	16	22	64	BBE 120 - 16
150	13	16.5	21.2	30	16	16	26	69	BBE 150 - 12
	14.7	16.5	21.2	30	16	16	26	69	BBE 150 - 14
	17	16.5	21.2	30	16	16	26	69	BBE 150 - 16
	21	16.5	21.2	30	19	23	26	79	BBE 150 - 20
185	13	18.5	23.5	34	17	17	32	78	BBE 185 - 12
	14.7	18.5	23.5	34	17	17	32	78	BBE 185 - 14
	17	18.5	23.5	34	17	17	32	78	BBE 185 - 16
	21	18.5	23.5	34	17	17	32	78	BBE 185 - 20
240	13	21	26.5	38	20	20	38	92	BBE 240 - 12
	14.7	21	26.5	38	20	20	38	92	BBE 240 - 14
	17	21	26.5	38	20	20	38	92	BBE 240 - 16
	21	21	26.5	38	20	20	38	92	BBE 240 - 20
	BL	21	26.5	38	-	-	38	92	BBE 240 - BL
300	13	23.5	30	43	22	22	42	101	BBE 300 - 12
	14.7	23.5	30	43	22	22	42	101	BBE 300 - 14
	17	23.5	30	43	22	22	42	101	BBE 300 - 16
	21	23.5	30	43	22	22	42	101	BBE 300 - 20
	BL	23.5	30	43	-	-	42	101	BBE 300 - BL
400	13	28.5	36.5	50	26	26	44	114	BBE 400 - 12
	14.7	28.5	36.5	50	26	26	44	114	BBE 400 - 14
	17	28.5	36.5	50	26	26	44	114	BBE 400 - 16
	21	28.5	36.5	50	26	26	44	114	BBE 400 - 20
	BL	28.5	36.5	50	-	-	44	114	BBE 400 - BL
500	17	30	39	56	28	28	48	124	BBE 500 - 16
	21	30	39	56	28	28	48	124	BBE 500 - 20
	BL	30	39	56	-	-	48	124	BBE 500 - BL
630	17	35	45	65	33	33	56	144	BBE 630 - 16
	21	35	45	65	33	33	56	144	BBE 630 - 20
	BL	35	45	65	-	-	56	144	BBE 630 - BL
*630	16	35	41	62	33	33	56	144	BBEL 630 - 16
*630	20	35	41	62	33	33	56	144	BBEL 630 - 20
800	BL	39	50.6	73.5	-	-	78	170	BBE 800 - BL
1000	BL	43	56.2	81	-	-	90	200	BBE 1000 - BL

*(SPECIAL) LIGHT DUTY - BBEL

TINNED COPPER TUBULAR CABLE LUGS WITHOUT INSPECTION HOLE (AS PER DIN 46235)

MATERIAL : ELECTROLYTIC COPPER

FINISH : ELECTRO TINNED



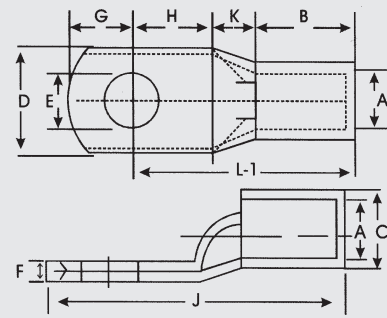
CABLE MM ²	STUD Ø E	DIMENSIONS (MM)				PROD. CODE
		A	C	B	J	
1.5	5.3	1.8	3.7	5	16	BNL 1.5 - 5
2.5	5.3	2.3	4	6	19	BNL 2.5 - 5
4	5.3	3	4.8	8	22	BNL 4 - 5
6	6.5	4	5.5	9	26	BNL 6 - 6
10	6.5	4.4	6.2	10	28	BNL 10 - 6
16	8.5	5.5	8	11	35	BNL 16 - 8
25	8.5	6.8	8.8	12	38	BNL 25 - 8
35	8.5	8.2	10.6	15	42	BNL 35 - 8
50	10.5	9.5	12.4	18	50	BNL 50 - 10
70	10.5	11.2	14.7	20	53	BNL 70 - 10
95	13	13.4	17.4	22	60	BNL 95 - 12
120	13	15	19.4	26	65	BNL 120 - 12
150	13	16.5	21.2	30	72	BNL 150 - 12
185	17	19	23.5	30	83	BNL 185 - 16
240	17	21	26.5	35	94	BNL 240 - 16
300	21	23.5	30	44	111	BNL 300 - 20
400	21	27	36.5	44	114	BNL 400 - 20
500	21	31	39	68	144	BNL 500 - 20
630	21	34	44	68	144	BNL 630 - 20
800	21	40	51	100	195	BNL 800 - 20
1000	21	44	56	100	200	BNL 1000 - 20

*OTHER HOLE SIZE ON REQUEST

LONG BARREL TINNED COPPER CABLE TERMINAL ENDS (AS PER DIN 46235)

MATERIAL : ELECTROLYTIC COPPER

FINISH : ELECTRO TINNED

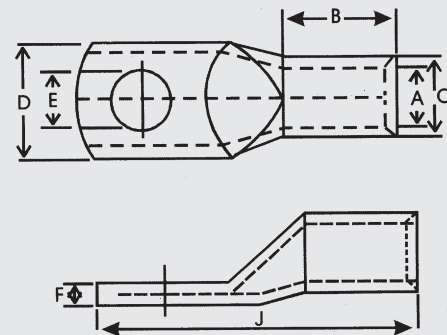
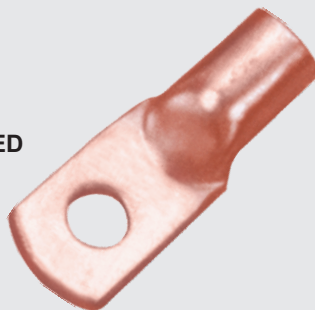


CABLE MM ²	STUD Ø E	DIMENSIONS (MM)										PROD. CODE
		A	C	D	F	G	H	K	B	L-1	J	
6	8.4	3.8	5.5	12	1	6	9	3	11	23	29	BTL6-8
10	8.4	4.5	6.2	12	1.2	6	9	3	11	23	29	BTL10-8
16	8.4	5.4	7.1	12	1.4	7	7	4	15	28	35	BTL16-8
25	8.4	6.8	8.8	16	2	7	7	4	15	28	35	BTL25-8
35	8.4	8.2	10.6	15.3	2.4	9	9	5	15	29	38	BTL35-8
50	13	9.5	2.4	18	2.9	10	11	6	20	37	47	BTL50-12
70	13	11.2	14.7	21	3.5	12	13	7	22	42	54	BTL70-12
95	13	13.5	17.4	25	3.9	13	13	9	24	46	59	BTL95-12
120	13	15	19.4	28	4.4	14	14	10	27	51	65	BTL120-12
150	13	16.5	21.2	30	4.7	16	16	11	32	59	75	BTL150-12
185	13	18.5	23.5	34	5	17	17	12	39	68	85	BTL185-12
240	17	21	26.5	38	5.5	20	20	14	46	80	100	BTL240-16
300	21	23.5	30	43	6.5	22	22	15	51	88	110	BTL300-20
400	21	28.5	36.5	50.1	8	26	26	18	53	97	123	BTL400-20
500	21	30	39	56	9	28	28	20	58	106	134	BTL500-20
630	21	35	45	65	10	33	33	22	68	123	156	BTL630-20
800	BL	39	50.6	73.5	11.6	-	-	17	94	-	186	BTL800-BL
1000	BL	43	56.2	81	13.2	-	-	20	108	-	218	BTL1000-BL

SOLDER LUGS

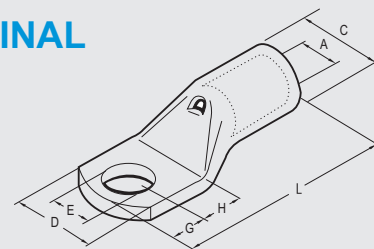
MATERIAL : ELECTROLYTIC COPPER

FINISH : ELECTRO TINNED / UNTINNED



CABLE MM ²	STUD Ø E	DIMENSION (MM ²)						PROD. CODE
		A	C	B	J	F	D	
60 AMP	10	9.55	11.40	15.00	47.00	9.60	17.00	BA 60 AMP
100 AMP	11	11.90	14.00	17.00	59.00	12.80	20.50	BA 100 AMP
150 AMP	12	14.30	17.20	20.00	68.00	14.20	25.50	BA 150 AMP
200 AMP	14	16.70	19.90	28.00	78.00	17.60	29.50	BA 200 AMP
300 AMP	17	20.70	24.40	33.00	87.00	20.70	36.00	BA 300 AMP
400 AMP	20	23.80	27.90	36.00	104.00	23.80	41.50	BA 400 AMP
500 AMP	21	26.20	31.50	40.00	108.00	27.20	46.00	BA 500 AMP

COPPER CRIMPING TYPE TUBULAR CABLE TERMINAL ENDS - SUITABLE FOR AMERICAN WIRE GAUGE (AS PER EUROPEAN STANDARD)

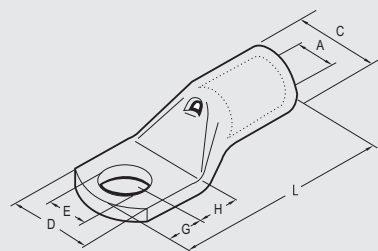


MATERIAL : ELECTROLYTIC COPPER

FINISH : ELECTRO TINNED

CABLE MM ²	STUD Ø E	DIMENSIONS (MM)						PROD. CODE
		A	C	D	G	H	L	
0.25/1.5	3.2	1.8	3.7	6.0	4.5	3.5	16.0	BE 0.25/1.5 - 3
	3.7	1.8	3.7	6.5	4.5	3.5	16.0	BE 0.25/1.5 - 3.5
	4.3	1.8	3.7	6.5	5.0	4.0	17.0	BE 0.25/1.5 - 4
	5.3	1.8	3.7	7.5	5.5	4.5	18.0	BE 0.25/1.5 - 5
	6.4	1.8	3.7	9.0	6.0	5.0	19.0	BE 0.25/1.5 - 6
1.5/2.5	3.2	2.4	4.0	6.0	4.5	3.5	17.0	BE 1.5/2.5 - 3
	3.7	2.4	4.0	6.5	4.5	3.5	17.0	BE 1.5/2.5 - 3.5
	4.3	2.4	4.0	7.5	5.0	4.0	18.0	BE 1.5/2.5 - 4
	5.3	2.4	4.0	8.5	5.5	4.5	19.0	BE 1.5/2.5 - 5
	6.4	2.4	4.0	9.0	6.0	5.0	20.0	BE 1.5/2.5 - 6
	8.4	2.4	4.0	12.0	9.0	8.0	26.0	BE 1.5/2.5 - 8
4/6	3.2	3.6	5.8	7.5	4.5	3.5	20.5	BE 4/6 - 3
	3.7	3.6	5.8	7.5	4.5	3.5	20.5	BE 4/6 - 3.5
	4.3	3.6	5.8	7.5	5.0	4.0	21.5	BE 4/6 - 4
	5.3	3.6	5.8	7.5	6.5	6.0	25.0	BE 4/6 - 5
	6.4	3.6	5.8	7.5	7.0	6.0	25.5	BE 4/6 - 6
	8.4	3.6	5.8	7.5	9.0	8.0	29.5	BE 4/6 - 8
10	10.5	3.6	5.8	7.5	11.0	10.0	33.5	BE 4/6 - 10
	4.3	4.6	6.8	10.0	5.0	4.0	22.5	BE 10 - 4
	5.3	4.6	6.8	10.0	6.5	6.0	26.0	BE 10 - 5
	6.4	4.6	6.8	11.0	7.0	6.0	26.5	BE 10 - 6
	8.4	4.6	6.8	15.0	9.0	8.0	30.5	BE 10 - 8
	10.5	4.6	6.8	18.0	11.0	10.0	34.5	BE 10 - 10
16	13.2	4.6	6.8	19.0	14.0	12.0	39.5	BE 10 - 12
	4.3	5.8	7.9	11.5	5.0	4.0	25.5	BE 16 - 4
	5.3	5.8	7.9	11.5	6.5	6.0	29.0	BE 16 - 5
	6.4	5.8	7.9	11.5	7.0	6.0	29.5	BE 16 - 6
	8.4	5.8	7.9	15.0	9.0	8.0	33.5	BE 16 - 8
	10.5	5.8	7.9	18.0	11.0	10.0	37.5	BE 16 - 10
25	13.2	5.8	7.9	20.0	14.0	12.0	42.5	BE 16 - 12
	4.3	6.8	9.3	14.0	5.0	4.0	28.0	BE 25 - 4
	5.3	6.8	9.3	14.0	6.5	6.0	31.5	BE 25 - 5
	6.4	6.8	9.3	14.0	7.0	6.0	32.0	BE 25 - 6
	8.4	6.8	9.3	14.0	9.0	8.0	36.0	BE 25 - 8
	10.5	6.8	9.3	14.0	11.0	10.0	40.0	BE 25 - 10
35	13.2	6.8	9.3	14.0	14.0	12.0	45.0	BE 25 - 12
	5.3	8.9	11.8	17.0	6.5	6.0	34.0	BE 35 - 5
	6.4	8.9	11.8	17.0	7.0	6.0	34.5	BE 35 - 6
	8.4	8.9	11.8	17.0	9.0	8.0	38.5	BE 35 - 8
	10.5	8.9	11.8	19.0	11.0	10.0	42.5	BE 35 - 10
	13.2	8.9	11.8	21.0	14.0	12.0	47.5	BE 35 - 12
50	6.4	10.0	13.0	19.0	8.0	7.0	40.5	BE 50 - 6
	8.4	10.0	13.0	19.0	9.0	8.0	42.5	BE 50 - 8
	10.5	10.0	13.0	20.0	11.0	10.0	46.5	BE 50 - 10
	13.2	10.0	13.0	21.0	14.0	12.0	51.5	BE 50 - 12
	15.0	10.0	13.0	25.0	16.0	14.0	55.5	BE 50 - 14
	17.0	10.0	13.0	26.0	18.0	16.0	59.5	BE 50 - 16
70	6.4	11.2	14.7	21.0	8.0	7.0	44.0	BE 70 - 6
	8.4	11.2	14.7	21.0	9.0	8.0	46.0	BE 70 - 8
	10.5	11.2	14.7	21.0	11.0	10.0	50.0	BE 70 - 10
	13.2	11.2	14.7	22.0	14.0	12.0	55.0	BE 70 - 12
	15.0	11.2	14.7	25.0	16.0	14.0	59.0	BE 70 - 14
	17.0	11.2	14.7	26.0	18.0	16.0	63.0	BE 70 - 16

**COPPER CRIMPING TYPE TUBULAR CABLE TERMINAL
ENDS - SUITABLE FOR AMERICAN WIRE GAUGE
(AS PER EUROPEAN STANDARD)**



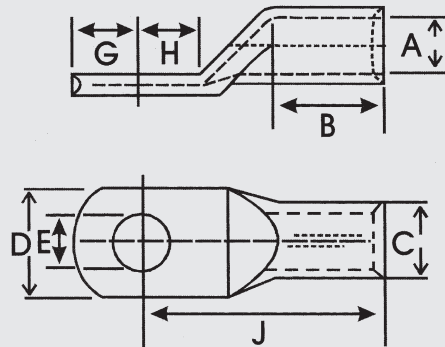
CABLE MM ²	STUD Ø E	DIMENSIONS (MM)						PROD. CODE
		A	C	D	G	H	L	
95	6.4	13.6	17.5	25.0	8.0	7.0	50.5	BE 95 - 6
	8.4	13.6	17.5	25.0	9.0	8.0	52.5	BE 95 - 8
	10.5	13.6	17.5	25.0	11.0	10.0	56.5	BE 95 - 10
	13.2	13.6	17.5	25.0	14.0	12.0	61.5	BE 95 - 12
	15.0	13.6	17.5	25.0	16.0	14.0	65.5	BE 95 - 14
	17.0	13.6	17.5	25.0	18.0	16.0	69.5	BE 95 - 16
	21.0	13.6	17.5	25.0	22.0	20.0	77.5	BE 95 - 20
120	8.4	15.2	19.5	28.5	9.0	8.0	54.0	BE 120 - 8
	10.5	15.2	19.5	28.5	11.0	10.0	58.0	BE 120 - 10
	13.2	15.2	19.5	28.5	14.0	12.0	63.0	BE 120 - 12
	15.0	15.2	19.5	28.5	16.0	14.0	67.0	BE 120 - 14
	17.0	15.2	19.5	28.5	18.0	16.0	71.0	BE 120 - 16
	21.0	15.2	19.5	30.0	22.0	20.0	79.0	BE 120 - 20
150	8.4	16.6	21.5	31.5	13.0	11.0	69.0	BE 150 - 8
	10.5	16.6	21.5	31.5	13.0	11.0	69.0	BE 150 - 10
	13.2	16.6	21.5	31.5	16.0	14.0	75.0	BE 150 - 12
	15.0	16.6	21.5	31.5	18.0	16.0	79.0	BE 150 - 14
	17.0	16.6	21.5	31.5	19.0	17.0	81.0	BE 150 - 16
	21.0	16.6	21.5	31.5	22.0	20.0	87.0	BE 150 - 20
185	8.4	19.2	24.5	35.5	13.0	11.0	76.0	BE 185 - 8
	10.5	19.2	24.5	35.5	13.0	11.0	76.0	BE 185 - 10
	13.2	19.2	24.5	35.5	16.0	14.0	82.0	BE 185 - 12
	15.0	19.2	24.5	35.5	18.0	16.0	86.0	BE 185 - 14
	17.0	19.2	24.5	35.5	19.0	17.0	88.0	BE 185 - 16
	21.0	19.2	24.5	35.5	22.0	20.0	94.0	BE 185 - 20
240	8.4	21.0	27.0	39.0	13.0	11.0	82.0	BE 240 - 8
	10.5	21.0	27.0	39.0	13.0	11.0	82.0	BE 240 - 10
	13.2	21.0	27.0	39.0	16.0	14.0	88.0	BE 240 - 12
	15.0	21.0	27.0	39.0	18.0	16.0	92.0	BE 240 - 14
	17.0	21.0	27.0	39.0	19.0	17.0	94.0	BE 240 - 16
	21.0	21.0	27.0	39.0	22.0	20.0	100.0	BE 240 - 20
300	10.5	23.7	30.0	44.0	20.0	11.0	96.0	BE 300 - 10
	13.2	23.7	30.0	44.0	20.0	14.0	99.0	BE 300 - 12
	15.0	23.7	30.0	44.0	22.0	16.0	103.0	BE 300 - 14
	17.0	23.7	30.0	44.0	22.0	19.0	106.0	BE 300 - 16
	21.0	23.7	30.0	44.0	24.0	23.0	112.0	BE 300 - 20
400	13.2	28.5	36.5	51.0	22.0	19.0	113.0	BE 400 - 12
	15.0	28.5	36.5	51.0	22.0	19.0	113.0	BE 400 - 14
	17.0	28.0	36.5	51.0	22.0	19.0	113.0	BE 400 - 16
	21.0	28.5	36.5	51.0	24.0	23.0	119.0	BE 400 - 20
500	17.0	30.3	39.0	56.5	22.0	19.0	117.0	BE 500 - 16
	21.0	30.3	39.0	56.5	24.0	23.0	123.0	BE 500 - 20
630	17.0	35.0	45.0	61.6	22.0	19.0	128.0	BE 630 - 16
	21.0	35.0	45.0	61.6	24.0	23.0	134.0	BE 630 - 20
800	17.0	39.0	50.6	72.0	24.0	19.0	141.0	BE 800 - 16
	21.0	39.0	50.6	72.0	24.0	23.0	145.0	BE 800 - 20
1000	17.0	44.0	56.2	80.0	24.0	19.0	158.0	BE 1000 - 16
	21.0	44.0	56.2	80.0	24.0	23.0	162.0	BE 1000 - 20

TUBULAR COMPRESSION CABLE LUGS (AS PER DIN 46235)

MATERIAL : ELECTROLYTIC COPPER

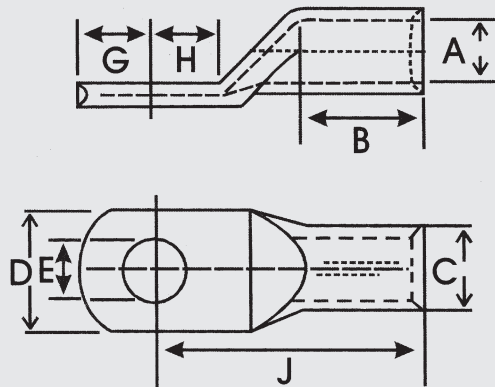
FINISH : UNTINNED OR ELECTRO TINNED.

For Circular Stranded Copper Conductor to DIN 48201 & Circular Stranded/ sector shaped Conductor to DIN VDE 0295.



CABLE MM ²	STUD Ø E	DIMENSIONS (MM)							PROD. CODE
		D	A	J	B	C	G	H	
6	5.3	8.5	3.8	24	10	5.5	6.5	7.5	BUTD 6-5
10	6.5	8.5	4.5	27.5	10	6	7	8.5	BUTD 10-6
16	6.5	8.5	5.5	27.5	10	6	7.5	8	BUTD 16-6
	8.4	12	5.5	35	20	8.5	10	10	BUTD 16-8
	10.5	17	5.5	37	20	8.5	12	12	BUTD 16-10
	13	19	5.5	37	20	8.5	13	13	BUTD 16-12
25	6.5	15	7	39	20	10	7.5	8	BUTD 25-6
	8.4	15	7	39	20	10	10	10	BUTD 25-8
	10.5	17	7	39	20	10	12	12	BUTD 25-10
	13	19	7	39	20	10	13	13	BUTD 25-12
35	8.4	17	8.2	42	20	12.5	7.5	8	BUTD 35-8
	10.5	19	8.2	42	20	12.5	10	10	BUTD 35-10
	13	21	8.2	42	20	12.5	12	12	BUTD 35-12
50	8.4	22	10	51	28	14.5	10	10	BUTD 50-8
	10.5	22	10	51	28	14.5	12	12	BUTD 50-10
	13	23	10	51	28	14.5	13	13	BUTD 50-12
	17	28	10	51	28	14.5	14.5	14.5	BUTD 50-16
70	10.5	24	11.5	54	28	16.5	10	10	BUTD 70-10
	13	24	11.5	54	28	16.5	12	12	BUTD 70-12
	17	32	11.5	54	28	16.5	13	13	BUTD 70-16
	21	32	11.5	54	28	16.5	14.5	14.5	BUTD 70-20
95	10.5	28	13.5	64	35	19	12	12	BUTD 95-10
	13	28	13.5	64	35	19	12	12	BUTD 95-12
	17	32	13.5	67	35	19	13	13	BUTD 95-16
	21	34	13.5	67	35	19	14.5	14.5	BUTD 95-20
120	10.5	32	15.5	68	35	21	15	16	BUTD 120-10
	13	32	15.5	68	35	21	15	17	BUTD 120-10
	17	32	15.5	69	35	21	18	19	BUTD 120-12
	21	38	15.5	69	35	21	19	20	BUTD 120-20

TUBULAR COMPRESSION CABLE LUGS
(AS PER DIN 46235)

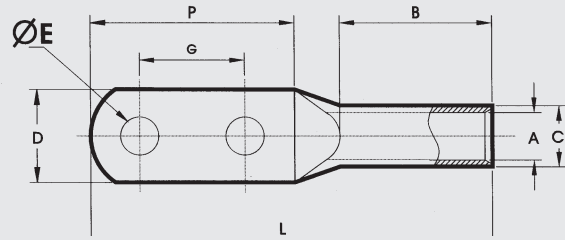


CABLE MM ²	STUD Ø E	DIMENSIONS (MM)							PROD. CODE
		D	A	J	B	C	G	H	
150	10.5	34	17	77	35	23.5	15	16	BUTD 150-10
	13	34	17	77	35	23.5	16	17	BUTD 150-12
	17	34	17	77	35	23.5	19	20	BUTD 150-16
	21	40	17	77	35	23.5	19	20	BUTD 150-20
185	10.5	37	19	81	40	25.5	15	16	BUTD 185-10
	13	37	19	81	40	25.5	16	17	BUTD 185-12
	17	37	19	81	40	25.5	19	20	BUTD 185-16
	21	40	19	81	40	25.5	19	20	BUTD 185-20
240	10.5	42	21.5	91	40	29	16	17	BUTD 240-10
	13	42	21.5	91	40	29	19	20	BUTD 240-12
	17	42	21.5	91	40	29	19	20	BUTD 240-16
	21	46	21.5	91	40	29	21	22	BUTD 240-20
300	13	48	24	100	50	32	19	22	BUTD 300-12
	17	48	24	100	50	32	19	22	BUTD 300-16
	21	48	24	100	50	32	22	22	BUTD 300-20
400	17	55	27.5	115	70	38.5	25	25	BUTD 400-16
	21	55	27.5	115	70	38.5	25	25	BUTD 400-20
500	21	60	31	127	70	42	25	25	BUTD 500-20
630	21	60	34.5	135	80	44	25	25	BUTD 630-20
800	21	60	40	165	100	52	30	30	BUTD 800-20
1000	21	80	44	165	100	58	30	30	BUTD 1000-20

COMPRESSION CABLE LUGS, WITH TWO HOLES (AS PER BRITISH STANDARD)

MATERIAL : ELECTROLYTIC COPPER

FINISH : ELECTRO TINNED



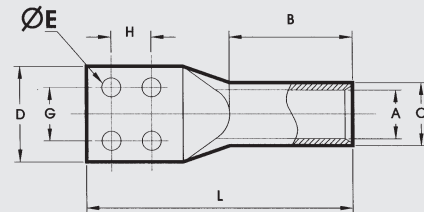
CABLE MM ²	STUD Ø E	DIMENSIONS (MM)							PROD. CODE
		A	C	D	G	P	B	L	
16	10.5	5.4	7.1	15	40	64	15	84	BTH 16 2E10
25	10.5	6.8	8.8	18	40	64	15	87	BTH 25 2E10
35	10.5	8.2	10.6	18	40	66	17	90	BTH 35 2E10
50	13	9.5	12.4	22.5	40	66	27.5	102	BTH 50 2E12
70	13	11.2	14.7	24	40	67	30	107	BTH 70 2E12
95	13	13.5	17.4	26	40	67	33	111	BTH 95 2E12
120	13	15	19.4	28	40	70	36	118	BTH 120 2E12
150	13	16.5	21.2	31	40	72	44	130	BTH 150 2E12
185	13	18.5	23.5	35	40	76	55	149	BTH 185 2E12
240	13	21	26.5	38	40	78	55	150	BTH 240 2E12
300	13	23.5	30	42	40	78	55	160	BTH 300 2E12

ALSO AVAILABLE DIMENSION 'G' AS PER REQUIREMENT

COMPRESSION CABLE LUGS FOR TRANSFORMER

MATERIAL : ELECTROLYTIC COPPER

FINISH : ELECTRO TINNED



CABLE MM ²	STUD Ø E	DIMENSIONS (MM ²)							PROD. CODE
		A	C	D	G	H	B	L	
240	8.5	21	28	58	35	25	45	110	BT 240 4E8
240	10.5	21	28	58	35	25	45	110	BT 240 4E10
300	8.5	23.5	31	58	35	25	50	115	BT 300 4E8
300	10.5	23.5	31	58	35	25	50	115	BT 300 4E10
400	8.5	27	36.5	58	35	25	52	120	BT 400 4E8
400	10.5	27	36.5	58	35	25	52	120	BT 400 4E10
500	8.5	30	39	58	35	25	56	124	BT 500 4E8
500	10.5	30	39	58	35	25	56	124	BT 500 4E10
*630	8.5	34	44	65	35	25	66	145	BT 630 4E8
*630	10.5	34	44	65	35	25	66	145	BT 630 4E10
630N	8.5	34	42	60	35	25	70	140	BT 630N 4E8
630N	10.5	34	42	60	35	25	70	140	BT 630N 4E10
800	8.5	39	50.6	73	35	25	90	170	BT 800 4E8
800	10.5	39	50.6	73	35	25	90	170	BT 800 4E10
1000	8.5	43	56.2	81	35	25	100	200	BT 1000 4E8
1000	10.5	43	56.2	81	35	25	100	200	BT 1000 4E10

*RADIUS HEAD ON REQUEST

CRIMPING TYPE COPPER TUBULAR IN-LINE CONNECTORS (LINKS)

MATERIAL : ELECTROLYTIC COPPER

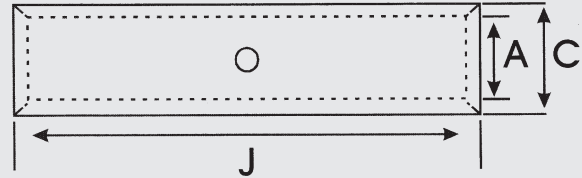
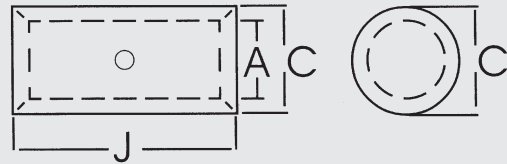
FINISH : ELECTRO TINNED

LONG BARREL CONNECTORS

CABLE MM ²	DIMENSIONS (MM)			PROD. CODE
	A	C	J	
1.5	1.8	3.7	22	BLB 1.5
2.5	2.4	4	22	BLB 2.5
4	3.1	4.8	22	BLB 4
6	3.8	5.5	22	BLB 6
10	4.5	6.2	22	BLB 10
16	5.4	7.1	44	BLB 16
20	6.3	7.7	44	BLB 20
25	6.8	8.8	47	BLB 25
35	8.2	10.6	47	BLB 35
50	9.5	12.4	47	BLB 50
70	11.2	14.7	50	BLB 70
95	13.5	17.4	54	BLB 95
120	15	19.4	65	BLB 120
150	16.5	21.2	65	BLB 150
185	18.5	23.5	65	BLB 185
240	21	26.5	89	BLB 240
300	23.5	30	89	BLB 300
400	28.5	36.5	90	BLB 400
500	30	39	115	BLB 500
550	31.7	41.5	115	BLB 550
630	35	45	115	BLB 630
800	39	50.6	230	BLB 800
1000	43	56.2	230	BLB 1000

BUTT TYPE CONNECTORS

CABLE MM ²	DIMENSIONS (MM)			PROD. CODE
	A	C	J	
1.5	1.8	3.7	6	BBC 1.5
2.5	2.4	4	6	BBC 2.5
4	3.1	4.8	9	BBC 4
6	3.8	5.5	10	BBC 6
10	4.6	6.2	11	BBC 10
16	5.8	7.1	12	BBC16
25	7	8.8	13	BBC 25
35	8.9	10.6	14	BBC 35
50	10	12.4	16	BBC 50
70	11.3	14.7	18	BBC 70
95	13.5	17.4	19	BBC 95
120	15.2	19.4	22	BBC 120
150	16.5	21.2	26	BBC 150



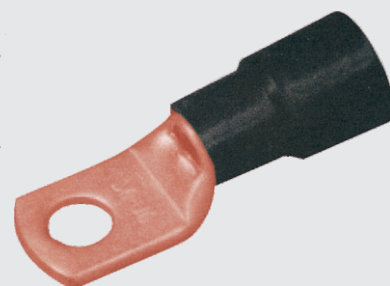
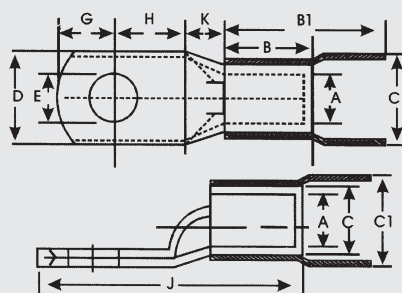
SHORT BARREL CONNECTORS.

CABLE MM ²	DIMENSIONS (MM)			PROD. CODE
	A	C	J	
1.5	1.8	3.7	12	BSB 1.5
2.5	2.4	4	15	BSB 2.5
4	3.1	4.8	15	BSB 4
6	3.8	5.5	15	BSB 6
10	4.5	6.2	20	BSB 10
16	5.4	7.1	20	BSB 16
20	6.3	7.7	22	BSB 20
25	6.8	8.8	32	BSB 25
35	8.2	10.6	36	BSB 35
50	9.5	12.4	40	BSB 50
70	11.2	14.7	45	BSB 70
95	13.5	17.4	45	BSB 95
120	15	19.4	45	BSB 120
150	16.5	21.2	55	BSB 150
185	18.5	23.5	60	BSB 185
240	21	26.5	80	BSB 240
300	23.5	30	85	BSB 300
400	28.5	36.5	85	BSB 400
500	30	39	100	BSB 500
550	31.7	41.5	110	BSB 550
630	35	45	110	BSB 630
800	39	50.6	150	BSB 800
1000	43	56.2	170	BSB 1000

TUBULAR CABLE LUGS WITH INSULATION (AS PER BRITISH STANDARD)

MATERIAL : ELECTROLYTIC COPPER

FINISH : ELECTRO TINNED / UNTINNED

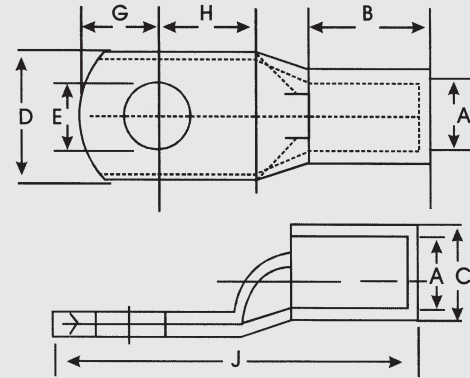


CABLE MM ²	STUD Ø E	DIMENSIONS (MM)									PROD. CODE
		A	C	C1	D	G	H	B	B1	J	
10	6.5	4.5	6.2	8	12	6	7	9	17	25	BTI 10-6
	8.4	4.5	6.2	8	12	6	9	9	17	27	BTI 10-8
	10.5	4.5	6.2	8	15	9	11	9	17	32	BTI 10-10
16	6.5	5.4	7.1	10	12	7	7	12	21	30	BTI 16-6
	8.4	5.4	7.1	10	12	7	7	12	21	36	BTI 16-8
	10.5	5.4	7.8	10	15	9	11	12	21	36	BTI 16-10
	13	5.4	7.8	10	18	10	12	12	21	38	BTI 16-12
20	8.4	6	7.7	10	12	7	9	12	21	32	BTI 20-8
25	6.5	6.8	8.8	11	13	7	7	12	24	30	BTI 25-6
	8.4	6.8	8.8	11	16	7	7	12	24	37	BTI 25-8
	10.5	6.8	8.8	11	18	10	11	12	24	37	BTI 25-10
	13	6.8	8.8	11	18	10	11	12	24	37	BTI 25-12
35	6.5	8.2	10.6	14	15.3	9	9	12	27	35	BTI 35-6
	8.4	8.2	10.6	14	15.3	9	9	12	27	35	BTI 35-8
	10.5	8.2	10.6	14	18	10	11	12	27	38	BTI 35-10
	13	8.2	10.6	14	18	10	11	12	27	38	BTI 35-12
	17	8.2	10.6	14	20	12	13	12	27	43	BTI 35-16
50	8.4	9.5	12.4	16	17.8	10	11	16	32	43	BTI 50-8
	10.5	9.5	12.4	16	17.8	10	11	16	32	43	BTI 50-10
	13	9.5	12.4	16	18	10	11	16	32	43	BTI 50-12
	17	9.5	12.4	16	20	12	13	16	32	47	BTI 50-16
70	8.4	11.2	14.7	18	21	12	13	18	33	50	BTI 70-8
	10.5	11.2	14.7	18	21	12	13	18	33	50	BTI 70-10
	13	11.2	14.7	18	21	12	13	18	33	50	BTI 70-12
	14.7	11.2	14.7	18	21	12	13	18	33	50	BTI 70-14
	17	11.2	14.7	18	21	12	13	18	33	50	BTI 70-16
95	10.5	13.5	17.4	20	25	13	13	20	40	55	BTI 95-10
	13	13.5	17.4	20	25	16	16	20	40	55	BTI 95-12
	14.7	13.5	17.4	20	28	16	16	20	40	61	BTI 95-14
	17	13.5	17.4	20	25	13	13	20	40	55	BTI 95-16
120	13	15	19.4	22	28	14	14	22	40	60	BTI 120-12
	14.7	15	19.4	22	28	14	14	22	40	60	BTI 120-14
	17	15	19.4	22	28	14	14	22	40	60	BTI 120-16
150	13	16.5	21.2	24	30	16	16	26	48	69	BTI 150-12
	14.7	16.5	21.2	24	30	16	16	26	48	69	BTI 150-14
	17	16.5	21.2	24	30	16	16	26	48	69	BTI 150-16
	21	16.5	21.2	24	34	19	23	26	48	79	BTI 150-20

HEAVY DUTY LUGS FOR COMPACTED XLPE CABLE

MATERIAL : ELECTROLYTIC COPPER

FINISH : ELECTRO TINNED

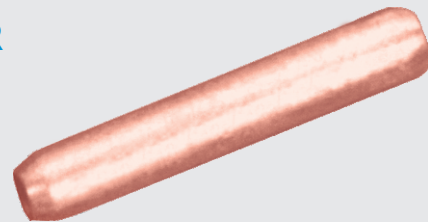


CABLE MM ²	NOMINAL DIA OF COND.	DIMENSIONS (MM)						PROD. CODE
		A	C	B	J	E	D	
35	7.1	7.3	10.5	16	24	11	19	B35
50	8.5	8.75	12.3	20	24	11	19	B50
70	10.1	10.4	14.6	21	27	14	20	B70
95	11.8	12.1	17	24	28	14	24	B95
120	13.2	14	19.1	26	28	14	26	B120
150	14.8	15.25	21.3	31	37	18	30	B150
185	16.4	17	23.7	34	40	19	33	B185
240	18.7	20	27.1	34	41	19	37	B240
300	20.9	21.63	30.5	38	48	20	42.5	B300
400	24.1	24.5	34.6	51	49	23.5	48	B400
500	27	28.5	38.9	51	52	25	54	B500
630	-	33	45	53	65	28	64	B630

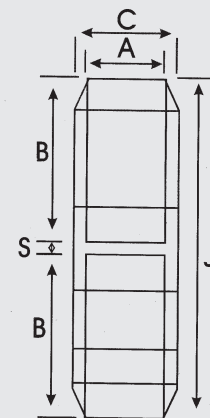
COPPER CONNECTORS WITH SOLID BARRIER

MATERIAL : ELECTROLYTIC COPPER

FINISH : ELECTRO TINNED / UNTINNED



CABLE MM ²	DIMENSIONS (MM)					PROD. CODE
	A	C	B	J	S	
16	5.5	7.5	22.5	47	2	BS 16
25	7	10	22.5	47	2	BS 25
35	8.2	11	22.5	47	2	BS 35
50	9.5	13	25	53	3	BS 50
70	11.5	15	25	53	3	BS 70
95	13.5	17.5	25	53	3	BS 95
120	15.5	20	30	63	3	BS 120
150	17	22	35	73	3	BS 150
185	19	24	40	84	4	BS 185
240	21	26	43	90	4	BS 240

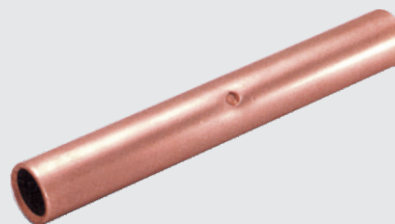
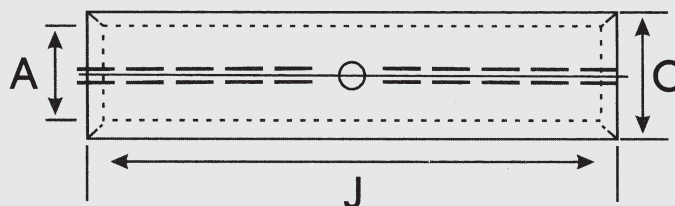


COMPRESSION FULL TENSION SLEEVE

(AS PER DIN 48085 PART I)

MATERIAL : ELECTROLYTIC COPPER

FINISH : ELECTRO TINNED / UNTINNED

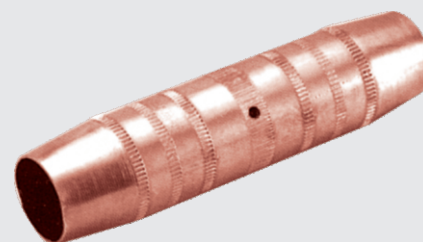


CABLE MM ²	DIMENSIONS (MM)			PROD. CODE
	A	C	J	
6	3.5	6.5	65	BCT - 6
10	4.5	8.5	80	BCT - 10
16	5.5	8.5	95	BCT - 16
25	7	10	95	BCT - 25
35	8.2	12.5	95	BCT - 35
50	10	14.5	110	BCT - 50
70	11.5	16.5	110	BCT - 70
95	13.5	21	145	BCT - 95
120	15	23.5	160	BCT - 120
150	16.5	25.5	180	BCT - 150
185	18.5	31.5	260	BCT - 185
240	21	34.5	310	BCT - 240
300	23.5	38.5	360	BCT - 300

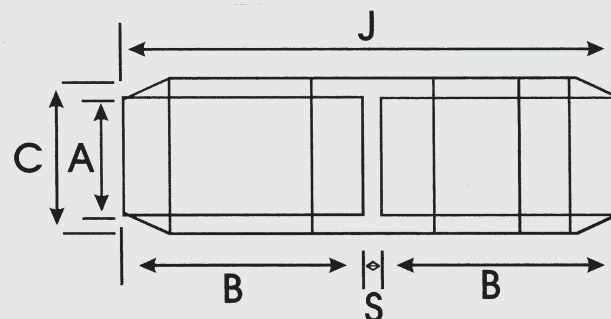
STRAIGHT SPLICE FOR MEDIUM VOLTAGE CABLES

MATERIAL : ELECTROLYTIC COPPER

FINISH : ELECTRO TINNED / UNTINNED



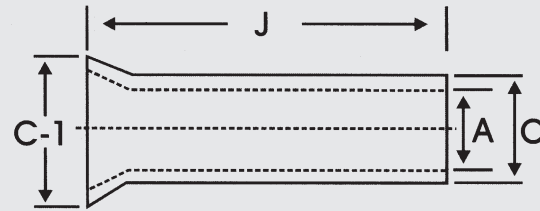
CABLE MM ²	DIMENSIONS (MM)			PROD. CODE
	A	J	C	
16	5.5	60	10	BNC - 16
25	7	60	10	BNC - 25
35	8	60	13.3	BNC - 35
50	9.5	60	13.3	BNC - 50
70	11.3	70	20	BNC - 70
95	13	80	20	BNC - 95
120	14.5	90	22.5	BNC - 120
150	16	100	22.5	BNC - 150
185	18.5	100	22.5	BNC - 185
240	21	120	29.7	BNC - 240
300	23.5	120	29.7	BNC - 300
400	27	120	34	BNC - 400
500	30	120	38.1	BNC - 500



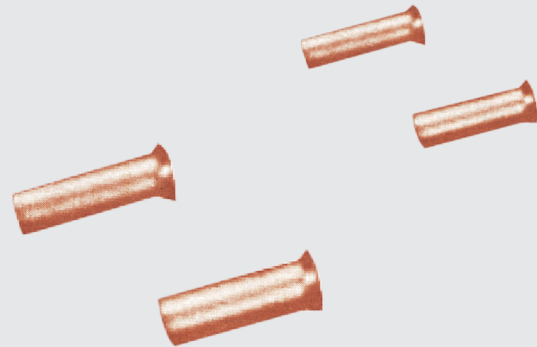
COPPER END SEALING FERRULES

MATERIAL : ELECTROLYTIC COPPER

FINISH : ELECTRO TINNED / UNTINNED



CABLE MM ²	DIMENSIONS (MM)				PROD. CODE
	A	C	C - 1	J	
0.5	1	1.4	2.1	6	BSF 508
0.75	1.4	1.8	2.5	6	BSF 509
1	1.6	2	2.7	6	BSF 510
	1.6	2	2.7	10	BSF 511
1.5	1.8	2.2	2.9	7	BSF 512
	1.8	2.2	2.9	10	BSF 513
2.5	2.3	2.7	2.9	7	BSF 514
	2.3	2.7	3.5	12	BSF 515
4	2.8	3.2	4	9	BSF 516
	2.8	3.2	4	12	BSF 517
6	3.7	4.1	4.8	10	BSF 518
	3.7	4.1	4.8	12	BSF 519
	3.7	4.1	4.8	15	BSF 520
10	4.6	5	5.8	18	BSF 521
	4.6	5	5.8	18	BSF 522
	4.6	5	5.8	18	BSF 523
16	5.9	6.3	7.5	12	BSF 524
	5.9	6.3	7.5	15	BSF 525
	5.9	6.3	7.5	18	BSF 526
25	6.7	7.2	9	12	BSF 527
	7.3	7.9	9.5	12	BSF 528
	7.3	7.9	9.5	15	BSF 529
	7.3	7.9	9.5	18	BSF 530
	7.3	7.9	9.5	20	BSF 531
35	8.3	8.9	11	15	BSF 532
	8.3	8.9	11	18	BSF 533
	8.3	8.9	11	20	BSF 534
	8.3	8.9	11	25	BSF 535
50	10.3	10.9	13	18	BSF 536
	10.3	10.9	13	22	BSF 537
	10.3	10.9	13	25	BSF 538
	10.3	10.9	13	30	BSF 539
70	12.5	13.3	15	22	BSF 540
	12.5	13.3	15	25	BSF 541
	12.5	13.3	15	30	BSF 542
95	14.5	15.3	17	25	BSF 543
	14.5	15.3	17	30	BSF 544
	14.5	15.3	17	32	BSF 545
120	16.5	17.5	19	30	BSF 546
	16.5	17.5	19	32	BSF 547
	16.5	17.5	19	34	BSF 548

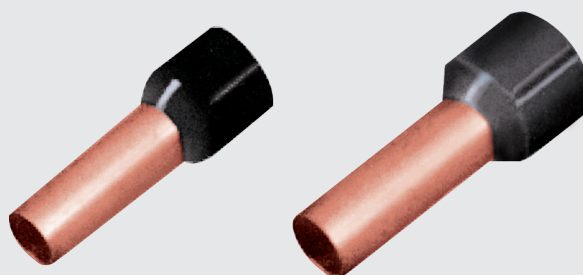


TUBULAR PLASTIC END SLEEVES

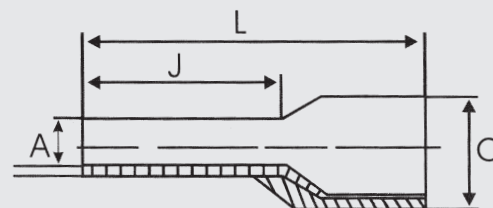
(DIN 46228 PART - 4)

MATERIAL : ELECTROLYTIC COPPER

FINISH : ELECTRO TINNED / UNTINNED



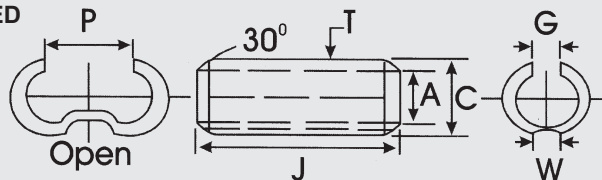
CABLE MM ²	DIMENSIONS (MM)				PROD. CODE
	J	A	C	L	
0.5	8	1	1.4	14	BSFI 608
	8	1	1.4	14	BSFI 609
	10	1	1.4	16	BSFI 610
0.75	6	1.2	1.6	13	BSFI 611
	8	1.2	1.6	15	BSFI 612
	12	1.2	1.6	18	BSFI 613
	12	1.2	1.6	18	BSFI 614
1	6	1.4	1.8	13	BSFI 615
	8	1.4	1.8	15	BSFI 616
	10	1.4	1.8	17	BSFI 617
	12	1.4	1.8	19	BSFI 618
1.5	8	1.7	2.1	15	BSFI 619
	10	1.7	2.1	17	BSFI 620
	18	1.7	2.1	29	BSFI 621
2.5	8	2.2	2.6	15	BSFI 622
	12	2.2	2.6	19	BSFI 623
	18	2.2	2.6	25	BSFI 624
4	10	2.8	3.2	18	BSFI 625
	12	2.8	3.2	20	BSFI 626
	18	2.8	3.2	26	BSFI 627
6	12	3.5	3.9	20	BSFI 628
	18	3.5	3.9	26	BSFI 629
10	12	4.5	4.9	22	BSFI 630
	18	4.5	4.9	28	BSFI 631
16	12	5.8	6.2	22	BSFI 632
	18	5.8	6.2	28	BSFI 633
25	16	7.3	7.9	29	BSFI 634
	22	7.3	7.9	35	BSFI 635
35	16	8.3	8.9	30	BSFI 636
	25	8.3	8.9	39	BSFI 637
50	20	10.3	10.9	36	BSFI 638
	25	10.3	10.9	40	BSFI 639



SOLDERING TYPE COPPER WEAK BACK FERRULES

MATERIAL : ELECTROLYTIC COPPER

FINISH : ELECTRO TINNED



NOTE : FERRULES SUPPLIED IN OPEN FORM

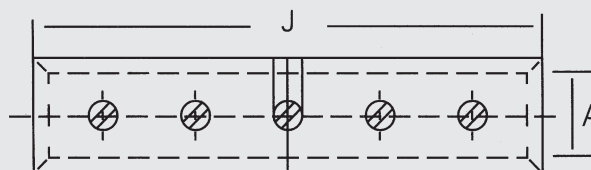
CABLE MM ²	DIMENSIONS (MM)							PROD. CODE
	A	C	G	J	T	P	W	
6	3	4.6	2	20	0.8	3	-	BWB 6
10	4.4	6	2	25	0.8	4	-	BWB 10
16	5.5	7.5	2	25	1	5	1.5	BWB 16
25	7	9	2	30	1	7	1.5	BWB 25
35	8	10.4	2	35	1.2	8	1.5	BWB 35
50	9.5	11.9	2	40	1.2	9	1.5	BWB 50
70	12	14.8	3	45	1.4	12	3	BWB 70
95	13.5	16.3	3	50	1.4	13	3	BWB 95
120	15.5	18.7	4	55	1.6	15	3	BWB 120
150	17	20.6	4	60	1.8	16	3	BWB 150
185	18.5	22.9	4	65	2.2	18	5	BWB 185
225	20.5	24.9	5	75	2.2	20	5	BWB 225
240	22	26.4	5	80	2.2	21	5	BWB 240
300	24	29.6	5	85	2.8	23	5	BWB 300
400	28.5	34.7	7	95	3.1	27	5	BWB 400
500	30.5	37.5	7	105	3.5	30	5	BWB 500
625	34.5	42.5	8	115	4	33	5	BWB 625

TINNED SCREW SLEEVES

MATERIAL : ELECTROLYTIC COPPER

FINISH : ELECTRO TINNED

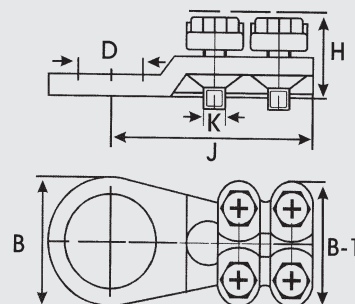
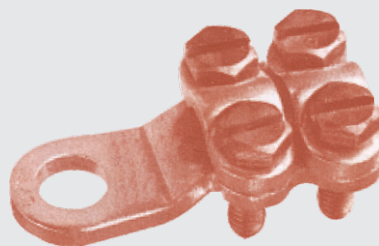
CABLE MM ²	DIMENSIONS (MM)		PROD. CODE
	A	J	
6	3.5	20	BTBSS - 6
10	4.4	30	BTBSS - 10
16	5.5	40	BTBSS - 16
25	6.8	45	BTBSS - 25
35	8.2	45	BTBSS - 35
50	9.5	48	BTBSS - 50
70	11.2	52	BTBSS - 70
95	13.4	55	BTBSS - 95
120	15	55	BTBSS - 120
150	16.5	60	BTBSS - 150
185	19	60	BTBSS - 185
240	21	65	BTBSS - 240
300	23.5	65	BTBSS - 300



PUNCHED COPPER CABLE - LUGS BOLTED WITH 4 SCREWS

MATERIAL : ELECTROLYTIC COPPER

FINISH : ELECTRO TINNED / UNTINNED



CABLE MM ²	DIMENSIONS (MM)						PROD. CODE
	D	J	B	B-1	H	K	
16 - 25	8.5	36	18.5	22.5	16	M - 5	BPS4 - 1
	10.5	37	19.5	22.5	16	M - 5	BPS4 - 2
25 - 35	8.5	38.5	18.5	24	16	M - 5	BPS4 - 3
	10.5	42	21.5	24	16	M - 5	BPS4 - 4
	13	42	21.5	24	16	M - 5	BPS4 - 5
35 - 50	10.5	46	19	28	19	M - 6	BPS4 - 6
	13	47	21	28	19	M - 6	BPS4 - 7
50 - 70	10.5	51	23.5	31	19	M - 6	BPS4 - 8
	13	51	23.5	31	19	M - 6	BPS4 - 9
70 - 95	10.5	57	24	34	25	M - 6	BPS4 - 10
	13	57	24	34	25	M - 6	BPS4 - 11
95 - 150	10.5	61	30	42	32	M - 8	BPS4 - 12
	13	61	30	42	32	M - 8	BPS4 - 13
	17	61.5	30	42	32	M - 8	BPS4 - 14
150 - 240	10.5	68.5	34	48.5	32	M - 8	BPS4 - 15
	13	68.5	34	48.5	32	M - 8	BPS4 - 16
	17	68.5	34	48.5	32	M - 8	BPS4 - 17
	21	70.5	36	48.5	32	M - 8	BPS4 - 18
185 - 300	13	68.5	32	50	37	M - 8	BPS4 - 19
	17	68.5	32	50	37	M - 8	BPS4 - 20
	21	70	34.5	50.5	37	M - 8	BPS4 - 21

COMPRESSION JOINTS

DIN 48085, PART 3

MATERIAL :

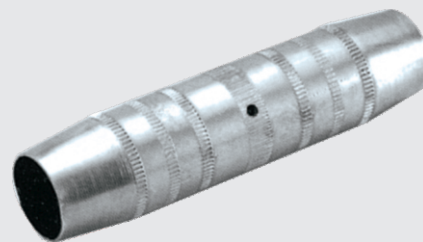
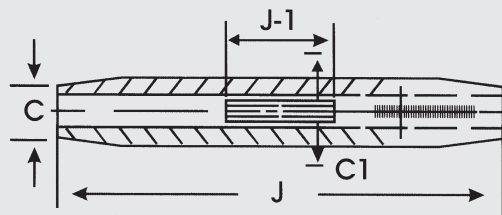
AL 99.5

ST 52

FINISH :

AL - BRIGHT

ST - FIRE ZINC COATED



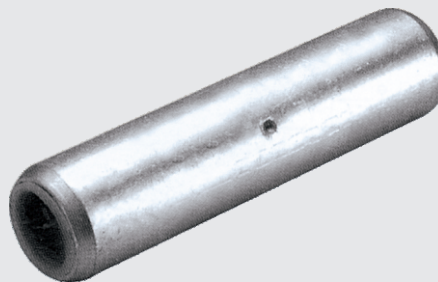
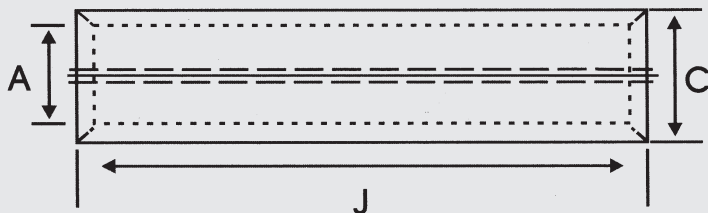
CONDUCTOR MM ²	ALUMINIUM DIM.		STEEL DIM.		PROD. CODE
	C	J	C1	J1	
25 - 4	3.5	20	6.3	65	BCOT - 25
35 - 6	14	235	6.3	75	BCOT - 35
50 - 8	16	270	7.5	95	BCOT - 50
70 - 12	18.5	270	9.5	95	BCOT - 70
95 - 15	22.5	310	9.6	95	BCOT - 90
120 - 20	25	380	13	110	BCOT - 120

ALUMINIUM COMPRESSION JOINTS

AS PER DIN 48085 PART 2

MATERIAL : AL 99.5

FINISH : BRIGHT / ELECTRO TINNED

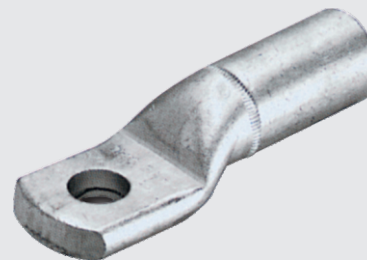
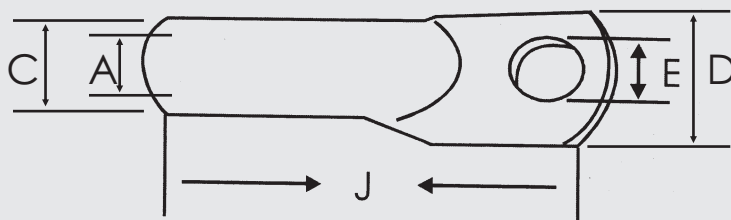


COND. MM ²	COND. DIA.	DIMENSIONS (MM)			PROD. CODE
		A	C	J	
16	5.1	5.8	12	140	BAFT - 16
25	6.3	6.8	12	140	BAFT - 25
35	7.5	8	14	140	BAFT - 35
50	9	10	16	155	BAFT - 50
70	10.5	11.5	18.5	165	BAFT - 70
95	12.5	13.5	22	165	BAFT - 95
120	14	15.5	25.5	250	BAFT - 120
150	15.7	16.5	28.5	300	BAFT - 150
185	17.5	18.5	28.5	330	BAFT - 185
240	20.2	21.5	34.5	350	BAFT - 240
300	22.5	23.5	38.5	400	BAFT - 300

TINNED ALUMINIUM CABLE TERMINAL ENDS

MATERIAL : AL 99.5

FINISH : BRIGHT / ELECTRO TINNED

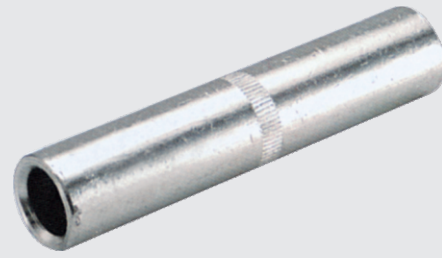


CABLE MM ²	DIMENSIONS (MM)					PROD. CODE
	A	C	D	E	J	
25	6.5	11	15	8.5	47	BTAT - 25
35	8	13.5	20	10.5	56	BTAT - 35
50	10	14	21	10.5	62	BTAT - 50
70	11	17	24	13.5	72	BTAT - 70
95	14	22	29	13.5	83	BTAT - 95
120	15	23.5	32	13.5	90	BTAT - 120
150	16.5	25.8	34	13.5	95	BTAT - 150
240	21	33.5	45	17	140	BTAT - 240

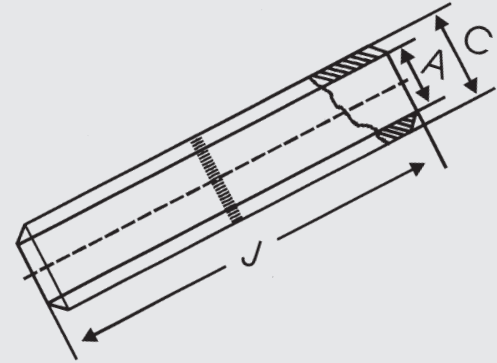
TINNED ALUMINIUM CABLE CONNECTORS / LINKS

MATERIAL : AL 99.5

FINISH : BRIGHT / ELECTRO TINNED



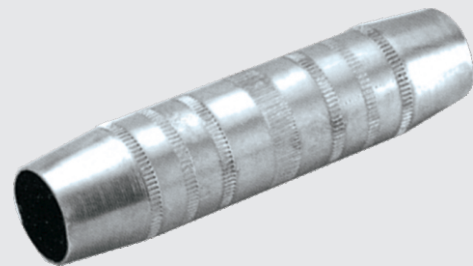
CABLE MM ²	DIMENSIONS (MM)			PROD. CODE
	A	C	J	
25	6.5	11	75	BTAC - 6
35	8	13.5	75	BTAC - 10
50	10	14	100	BTAC - 16
70	11	17	100	BTAC - 25
95	14	22	100	BTAC - 35
120	15	23.5	140	BTAC - 120
150	16.5	25.8	140	BTAC - 150
185	18.5	28	140	BTAC - 185
240	21	33.5	140	BTAC - 240
300	23.5	36	160	BTAC - 300



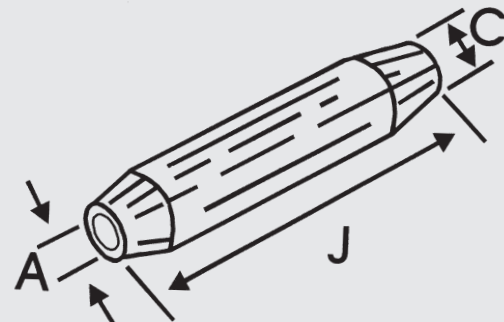
ALUMINIUM SLEEVES FOR LOW / HALF VOLTAGE SPLICING OF ALUMINIUM CABLES

MATERIAL : AL 99.5

FINISH : NATURAL / PASSIVATED ALUMINIUM.



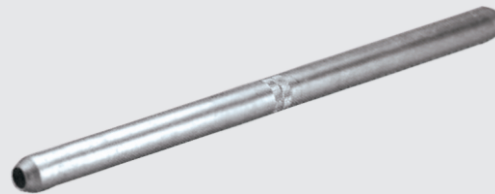
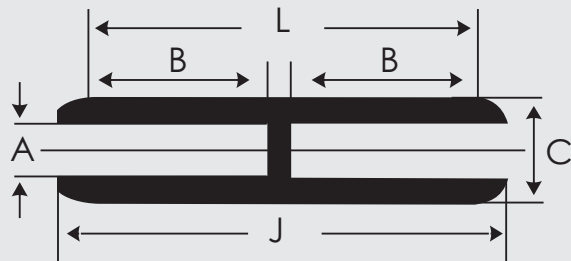
CABLE MM ²	DIMENSIONS (MM)			PROD. CODE
	A	C	J	
25	6.5	20	149	BASS - 25
35	8.5	20	149	BASS - 35
50	9.5	20	149	BASS - 50
70	11.7	20	138	BASS - 70
95	13	20	138	BASS - 95
120	14.7	25	163	BASS - 120
150	16.5	25	163	BASS - 150



ALUMINIUM SPLICE FOR LV & MV (UPTO 30 KV), FOR SIMILAR CABLE CROSS SECTIONAL AREAS

MATERIAL : AL 99.5

FINISH : NATURAL / PASSIVATED ALUMINIUM.

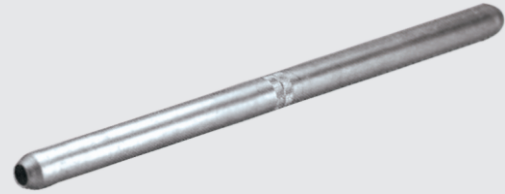
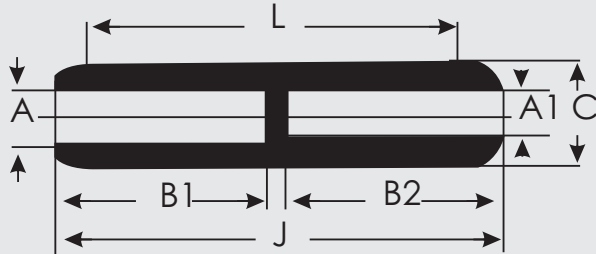


CABLE MM ²	DIMENSIONS (MM)					PROD. CODE
	A	C	L	B	J	
16	5.5	16	76	43	90	BASC - 16
25	6.5	16	76	43	90	BASC - 25
35	8	16	80	53	92	BASC - 35
50	9	20	93	53	110	BASC - 50
70	11	20	96	53	110	BASC - 70
95	12.5	20	98	53	110	BASC - 95
120	13.7	20	117	66	135	BASC - 120
150	15.5	25	118	66	135	BASC - 150
185	17	32	122	70	146	BASC - 150
240	19.5	32	124	70	146	BASC - 240
300	23.3	36	185	100	208	BASC - 300
400	26	36	190	100	208	BASC - 400
500	29.1	47	190	107	222	BASC - 500
630	33.5	47	197	107	222	BASC - 630
800	37.5	60	232	127	274	BASC - 800
1000	42	60	240	128	276	BASC - 1000

ALUMINIUM SPLICE FOR LV & MV (UPTO 30 KV), FOR DISSIMILAR CABLE CROSS SECTIONAL AREAS

MATERIAL : AL 99.5

FINISH : NATURAL / PASSIVATED ALUMINIUM.

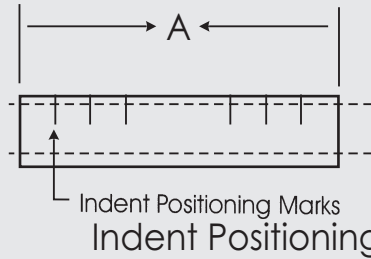
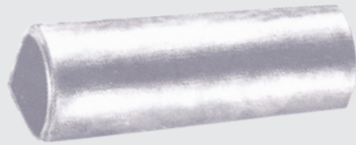


CABLE MM ²	DIMENSIONS (MM)							PROD. CODE
	A	A1	C	L	B1	B2	J	
25 - 16	6.5	5.5	16	77	43	43	90	BADC 25 - 16
35 - 25	8	6.5	16	77	43	43	90	BADC 35 - 25
50 - 25	9	6.5	20	91	51	51	108	BADC 50 - 25
50 - 35	9	8	20	91	51	51	108	BADC 50 - 35
70 - 35	11	8	20	92	51	52	108	BADC 70 - 35
70 - 50	11	9	20	95	52	53	110	BADC 70 - 50
95 - 35	12.5	8.5	20	93	52	52	108	BADC 95 - 35
95 - 50	12.5	9	20	95	52	53	110	BADC 95 - 50
95 - 70	12.5	11	20	95	52	53	109	BADC 95 - 70
120 - 35	13.7	8	25	111	64	64	132	BADC 120 - 35
120 - 50	13.7	9	25	111	64	64	132	BADC 120 - 50
120 - 95	13.7	12.5	25	112	64	64	132	BADC 120 - 95
150 - 50	15.5	9.5	25	116	64	66	135	BADC 150 - 50
150 - 70	15.5	11	25	116	64	66	135	BADC 150 - 70
150 - 95	15.5	12.5	25	116	64	66	135	BADC 150 - 95
150 - 120	15.5	13.7	25	116	64	66	135	BADC 150 - 120
185 - 70	17	11	32	118	69	69	144	BADC 185 - 70
185 - 95	-	-	32	122	69	72	146	BADC 185 - 95
185 - 120	17	13.7	32	119	70	70	145	BADC 185 - 120
185 - 150	17	15.5	32	121	70	71	146	BADC 185 - 150
240 - 70	19.5	11	32	122	69	73	147	BADC 240 - 70
240 - 95	19.5	12.5	32	122	69	72	146	BADC 240 - 95
240 - 120	19.5	13.7	32	122	69	72	146	BADC 240 - 120
240 - 150	19.5	15.5	32	122	69	72	146	BADC 240 - 150
240 - 185	19.5	17	32	122	69	71	145	BADC 240 - 185

ALUMINIUM CONNECTORS FOR TERMINATION OF 2, 3 AND 4 CORE SECTOR SHAPED CABLES

MATERIAL : AL 99.5

FINISH : NATURAL / PASSIVATED ALUMINIUM.



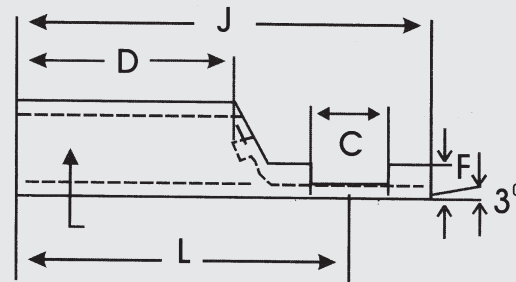
2 - CORE	3 - CORE	4 - CORE
B	C	D
13	13	12
15	15	14
16	16	15
18	18	17
20	21	19
23	24	22
26	25	24
28	29	26
31	31	29
-	35	33
-	40	39

CABLE MM ²	SIZE A	PRODUCT CODE		
		2 - CORE	3 - CORE	4 - CORE
16	50	BASSC 2 - 16	BASSC 3 - 16	BASSC 4 - 16
25	52	BASSC 2 - 25	BASSC 3 - 25	BASSC 4 - 25
35	56	BASSC 2 - 35	BASSC 3 - 35	BASSC 4 - 35
50	60	BASSC 2 - 50	BASSC 3 - 50	BASSC 4 - 50
70	62	BASSC 2 - 70	BASSC 3 - 70	BASSC 4 - 70
95	96	BASSC 2 - 95	BASSC 3 - 95	BASSC 4 - 95
120	96	BASSC 2 - 120	BASSC 3 - 120	BASSC 4 - 120
150	106	BASSC 2 - 150	BASSC 3 - 150	BASSC 4 - 150
185	106	BASSC 2 - 185	BASSC 3 - 185	BASSC 4 - 185
240	120	BASSC 2 - 240	BASSC 3 - 240	BASSC 4 - 240
300	120	BASSC 2 - 300	BASSC 3 - 300	BASSC 4 - 300

STRAIGHT TERMINALS / LUGS FOR TERMINATION OF 2, 3 AND 4 CORE SECTOR SHAPED CABLES

MATERIAL : AL 99.5

FINISH : NATURAL / PASSIVATED ALUMINIUM.

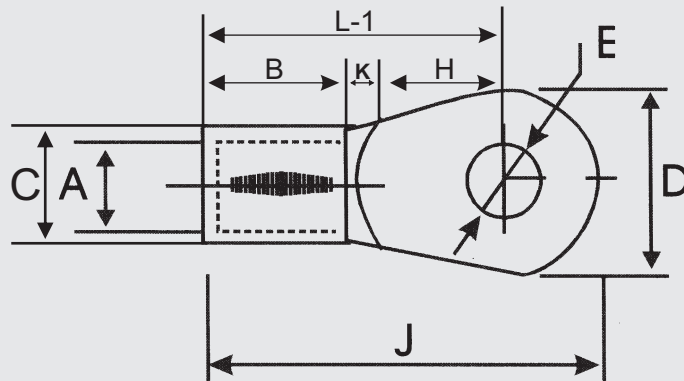


CABLE MM ²	DIMENSIONS (MM)					PRODUCT CODE		
	J	C	D	L	F	2 - CORE	3 - CORE	4 - CORE
16	48	7	25	40	5	BASST 2 - 16	BASST 3 - 16	BASST 4 - 16
25	52	9	26	42	5	BASST 2 - 25	BASST 3 - 25	BASST 4 - 25
35	56	9	28	45	5	BASST 2 - 35	BASST 3 - 35	BASST 4 - 35
50	59	11	30	48	5	BASST 2 - 50	BASST 3 - 50	BASST 4 - 50
70	64	11	31	51	6	BASST 2 - 70	BASST 3 - 70	BASST 4 - 70
95	83	13	48	69	6	BASST 2 - 95	BASST 3 - 95	BASST 4 - 95
120	86	13	48	71	6	BASST 2 - 120	BASST 3 - 120	BASST 4 - 120
150	94	17	53	78	7	BASST 2 - 150	BASST 3 - 150	BASST 4 - 150
185	98	17	53	80	8	BASST 2 - 185	BASST 3 - 185	BASST 4 - 185
240	111	21	60	91	9	-	BASST 3 - 240	BASST 4 - 240
300	117	21	60	94	10	-	BASST 3 - 300	BASST 4 - 300

RING TYPE TINNED COPPER CABLE TERMINAL ENDS

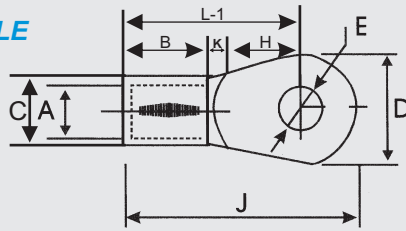
MATERIAL : ELECTROLYTIC COPPER

FINISH : ELECTRO TINNED



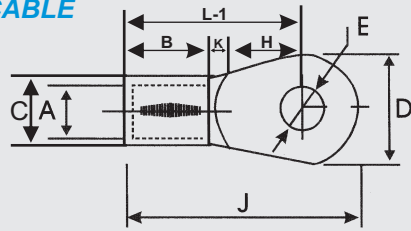
CABLE MM ²	STUD Ø E	DIMENSIONS (MM)									PROD. CODE
		A	C	D	F	B	K	H	L-1	J	
1.5	3.2	1.6	3.2	6.8	0.8	5	1	3.6	9.6	13	BR - 7153
	3.7	1.6	3.2	6.8	0.8	5	1	3.6	9.6	13	BR - 7048
	4.2	1.6	3.2	6.8	0.8	5	1	3.6	9.6	13	BR - 7049
	2.2	1.6	3.2	6	0.8	5	2	4	11	14	BR - 7103
	2.6	1.6	3.2	6	0.8	5	2	4	11	14	BR - 7000
	3.2	1.6	3.2	6	0.8	5	2	4	11	14	BR - 7001
	3.7	1.6	3.2	6	0.8	5	2	4	11	14	BR - 7002
	4.2	1.6	3.2	6	0.8	5	2	4	11	14.5	BR - 7003
	4.2	1.6	3.2	7	0.8	5	2	5	12	16	BR - 7154
	3.2	1.6	3.2	8	0.8	5	2	5	12	16	BR - 7104
	4.2	1.6	3.2	8	0.8	5	2	5	12	16	BR - 7004
	5.2	1.6	3.2	8	0.8	5	2	5	13	16	BR - 7005
	4.2	1.6	3.2	10	0.8	5	2	6	13	18	BR - 7105
	5.2	1.6	3.2	10	0.8	5	2	6	13	18	BR - 7006
6.4	1.6	3.2	10	0.8	5	2	6	13	18	BR - 7007	
6.4	1.6	3.2	12	0.8	5	1	6	12	18	BR - 7106	
2.5	3.2	2.3	3.9	6.5	0.8	5	1	3.5	9.5	12.7	BR - 7107
	3.7	2.3	3.9	6.5	0.8	5	1	3.5	9.5	12.7	BR - 7008
	3.7	2.3	3.9	8	0.8	5	2	5	12	16	BR - 7108
	4.2	2.3	3.9	8	0.8	5	2	5	12	16	BR - 7009
	5.2	2.3	3.9	8	0.8	5	2	5	12	16	BR - 7010
	5.2	2.3	3.9	10	0.8	5	1	7	13	18	BR - 7109
	6.4	2.3	3.9	10	0.8	5	1	7	13	18	BR - 7011
	5.2	2.3	3.9	12	0.8	5	2	9	16	22	BR - 7110
	6.4	2.3	3.9	12	0.8	5	2	9	16	22	BR - 7012
	8.2	2.3	3.9	12	0.8	5	2	9	16	22	BR - 7013
	6.4	2.3	3.9	16	0.8	5	2	10	17	25	BR - 7111
	8.2	2.3	3.9	16	0.8	5	2	10	17	25	BR - 7014
	10.2	2.3	3.9	16	0.8	5	2	10	17	25	BR - 7015
	10.2	2.3	3.9	18	0.8	5	1	14	20	29	BR - 7151
12.7	2.3	3.9	18	0.8	5	1	14	20	29	BR - 7047	

**RING TYPE TINNED COPPER CABLE
TERMINAL ENDS**



CABLE MM ²	STUD Ø E	DIMENSIONS (MM)									PROD. CODE
		A	C	D	F	B	K	H	L-1	J	
4 - 6	4.2	3.5	5.5	8	1	6	2	5	13	17	BR - 7155
	5.2	3.5	5.5	8	1	6	2	5	13	17	BR - 7050
	4.2	3.5	5.5	10	1	6	3	5	14	19	BR - 7112
	5.2	3.5	5.5	10	1	6	3	5	14	19	BR - 7016
	5.2	3.5	5.5	12	1	6	2	6	14	20	BR - 7113
	6.4	3.5	5.5	12	1	6	2	6	14	20	BR - 7017
	8.2	3.5	5.5	12	1	6	2	6	14	20	BR - 7018
	5.2	3.5	5.5	12	1	6	3	7	16	22	BR - 7114
	6.4	3.5	5.5	12	1	6	3	7	16	22	BR - 7019
	5.2	3.5	5.5	8	1	6	3	9.8	18.8	22.8	BR - 7157
	6.4	3.5	5.5	14	1	6	2	10.5	18.5	25.5	BR - 7115
	8.2	3.5	5.5	14	1	6	2	10.5	18.5	25.5	BR - 7020
	9.7	3.5	5.5	14	1	6	2	10.5	18.5	25.5	BR - 7021
	8.2	3.5	5.5	16	1	6	3	13	22	30	BR - 7116
10	10.2	3.5	5.5	16	1	6	3	13	22	30	BR - 7022
	8.2	3.5	5.5	18	1	6	3	12	21	30	BR - 7117
	10.2	3.5	5.5	18	1	6	3	12	21	30	BR - 7023
	12.7	3.5	5.5	18	1	6	3	12	21	30	BR - 7024
	4.2	4.3	6.3	10	1	8	2	7	17	22	BR - 7118
	5.2	4.3	6.3	10	1	8	2	7	17	22	BR - 7025
	4.2	4.3	6.3	10	1	8	3	4	15	20	BR - 7119
	5.2	4.3	6.3	10	1	8	3	4	15	20	BR - 7026
	6.4	4.3	6.3	12	1	8	2	7	17	23	BR - 7120
	8.2	4.3	6.3	16	1	8	4	7	19	27	BR - 7121
	8.2	4.3	6.3	18	1	8	4	9	21	30	BR - 7122
	10.2	4.3	6.3	18	1	8	4	9	21	30	BR - 7027
	10.2	4.3	6.3	22	1	8	5	10	23	34	BR - 7123
	12.7	4.3	6.3	22	1	8	5	10	23	34	BR - 7028
16	5.2	5.6	8	10	1.2	10	3	6	19	24	BR - 7124
	5.2	5.6	8	12	1.2	10	4	6	20	26	BR - 7125
	6.4	5.6	8	12	1.2	10	4	6	20	26	BR - 7029
	6.4	5.6	8	16	1.2	10	4	8	22	30	BR - 7126
	8.2	5.6	8	16	1.2	10	4	8	22	30	BR - 7030
	9.7	5.6	8	16	1.2	10	4	8	22	30	BR - 7031
	8.2	5.6	8	18	1.2	10	4	10	24	33	BR - 7127
	10.2	5.6	8	18	1.2	10	4	10	24	33	BR - 7032
	10.2	5.6	8	22	1.2	10	6	8	24	35	BR - 7128
	12.7	5.6	8	22	1.2	10	6	8	24	35	BR - 7033

**RING TYPE TINNED COPPER CABLE
TERMINAL ENDS**



CABLE MM ²	STUD Ø E	DIMENSIONS (MM)									PROD. CODE
		A	C	D	F	B	K	H	L-1	J	
25	6.4	7.5	11.1	12	1.8	11	4	10	25	31	BR - 7156
	8.2	7.5	11.1	12	1.8	11	4	10	25	31	BR - 7051
	6.4	7.5	11.1	16	1.8	11	5	6	22	30	BR - 7129
	8.2	7.5	11.1	16	1.8	11	5	6	22	30	BR - 7034
	10.2	7.5	11.1	16	1.8	11	5	6	22	30	BR - 7035
	6.4	7.5	11.1	16	1.8	11	4	10	25	33	BR - 7130
	8.2	7.5	11.1	16	1.8	11	4	10	25	33	BR - 7036
	10.2	7.5	11.1	18	1.8	11	5	9	25	34	BR - 7131
	10.2	7.5	11.1	22	1.8	11	6	14	31	42	BR - 7132
	12.7	7.5	11.1	22	1.8	11	6	14	31	42	BR - 7037
35	6.4	9	12.6	16	1.8	12	5	6	23	31	BR - 7133
	8.2	9	12.6	16	1.8	12	5	6	23	31	BR - 7038
	8.2	9	12.6	18	1.8	12	5	10	27	36	BR - 7134
	10.2	9	12.6	18	1.8	12	5	10	27	36	BR - 7039
	10.2	9	12.6	22	1.8	12	4	15	31	42	BR - 7135
	12.7	9	12.6	22	1.8	12	4	15	31	42	BR - 7040
50	8.2	10.5	14.1	18	1.8	16	6	12	34	43	BR 7136
	10.2	10.5	14.1	18	1.8	16	6	12	34	43	BR 7041
	10.2	10.5	14.1	22	1.8	16	7	9	32	43	BR 7137
	10.2	10.5	14.1	24	1.8	16	6	14	36	48	BR 7138
	12.7	10.5	14.1	24	1.8	16	6	14	36	48	BR 7042
	16.2	10.5	14.1	32	1.8	16	7	15	38	54	BR 7139
70	10.2	12	16	22	2	18	7	11	36	47	BR 7140
	12.7	12	16	22	2	18	7	11	36	47	BR 7043
	12.7	12	16	24	2	18	8	10	36	48	BR 7141
	16.2	12	16	28	2	18	6	16	40	54	BR 7142
95	10.2	13.5	18.1	22	2.3	20	5	10	35	46	BR 7143
	10.2	13.5	18.1	24	2.3	20	6	12	38	50	BR 7144
	12.7	13.5	18.1	24	2.3	20	6	12	38	50	BR 7044
	16.2	13.5	18.1	28	2.3	20	7	17	44	58	BR 7145
120	12.7	15	20.2	26	2.6	22	10	7	39	52	BR 7146
	20.3	15	20.2	40	2.6	22	10	20	52	72	BR 7148
150	12.7	16.5	23.7	34	3.6	24	9	16	49	66	BR 7149
	16.2	16.5	23.7	34	3.6	24	9	16	49	66	BR 7045
	16.2	16.5	23.7	40	3.6	24	10	20	54	74	BR 7150
	20.3	16.5	23.7	40	3.6	24	10	20	54	74	BR 7046

RING TYPE INSULATED TINNED COPPER CABLE TERMINAL ENDS

MATERIAL : ELECTROLYTIC COPPER

FINISH : ELECTRO TINNED

COLOUR CODING OF INSULATION SLEEVE	
SIZE	COLOUR
1.5	RED
2.5	BLUE
4- 6	YELLOW

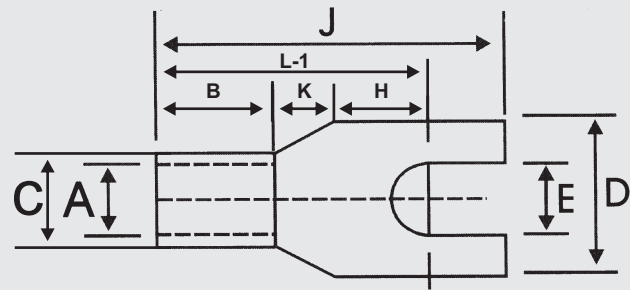
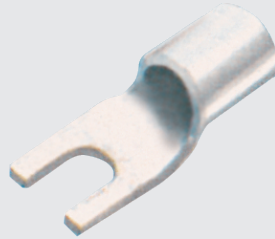


CABLE MM ²	STUD Ø E	DIMENSIONS (MM)											PROD. CODE
		A	C	D	F	B	K	H	J	J-1	L-3	C-1	
1.5	3.2	1.6	3.2	6.8	0.8	5	1	3.6	13	10	14.6	4.8	BRI-7057
	3.7	1.6	3.2	6.8	0.8	5	1	3.6	13	10	14.6	4.8	BRI-7058
	4.2	1.6	3.2	6.8	0.8	5	1	3.6	13	10	14.6	4.8	BRI-7059
	2.2	1.6	3.2	6	0.8	5	2	4	14	10	16	4.8	BRI-7052
	2.6	1.6	3.2	6	0.8	5	2	4	14	10	16	4.8	BRI-7053
	3.2	1.6	3.2	6	0.8	5	2	4	14	10	16	4.8	BRI-7054
	3.7	1.6	3.2	6	0.8	5	2	4	14	10	16	4.8	BRI-7055
	4.2	1.6	3.2	6	0.8	5	2	4	14	10	16	4.8	BRI-7056
	4.2	1.6	3.2	7	0.8	5	1	5	14.5	10	16	4.8	BRI-7057
	3.2	1.6	3.2	8	0.8	5	2	5	16	10	17	4.8	BRI-7058
	4.2	1.6	3.2	8	0.8	5	2	5	16	10	17	4.8	BRI-7059
	5.2	1.6	3.2	8	0.8	5	2	5	16	10	17	4.8	BRI-7060
	4.2	1.6	3.2	10	0.8	5	2	6	18	10	18	4.8	BRI-7061
	5.2	1.6	3.2	10	0.8	5	2	6	18	10	18	4.8	BRI-7062
	6.4	1.6	3.2	10	0.8	5	2	6	18	10	18	4.8	BRI-7063
	6.4	1.6	3.2	12	0.8	5	1	6	18	10	17	4.8	BRI-7064
2.5	3.2	2.3	3.9	6.5	0.8	5	1	3.5	12.7	10	14.5	5.5	BRI-7068
	3.7	2.3	3.9	6.5	0.8	5	1	3.5	12.7	10	14.5	5.5	BRI-7069
	3.7	2.3	3.9	8	0.8	5	2	5	16	10	17	5.5	BRI-7070
	4.2	2.3	3.9	8	0.8	5	2	5	16	10	17	5.5	BRI-7071
	5.2	2.3	3.9	8	0.8	5	2	5	16	10	17	5.5	BRI-7072
	5.2	2.3	3.9	10	0.8	5	1	7	18	10	18	5.5	BRI-7073
	6.4	2.3	3.9	10	0.8	5	1	7	18	10	18	5.5	BRI-7074
	5.2	2.3	3.9	12	0.8	5	2	9	22	10	21	5.5	BRI-7075
	6.4	2.3	3.9	12	0.8	5	2	9	22	10	21	5.5	BRI-7076
	8.2	2.3	3.9	12	0.8	5	2	9	22	10	21	5.5	BRI-7077
	6.4	2.3	3.9	16	0.8	5	2	10	25	10	22	5.5	BRI-7078
	8.2	2.3	3.9	16	0.8	5	2	10	25	10	22	5.5	BRI-7079
	10.2	2.3	3.9	16	0.8	5	2	10	25	10	22	5.5	BRI-7080
10.2	2.3	3.9	18	0.8	5	1	14	29	10	25	5.5	BRI-7081	
12.7	2.3	3.9	18	0.8	5	1	14	29	10	25	5.5	BRI-7082	
4- 6	4.2	3.5	5.5	8	1	6	2	5	17	14	21	7.1	BRI-7083
	5.2	3.5	5.5	8	1	6	2	5	17	14	21	7.1	BRI-7084
	4.2	3.5	5.5	10	1	6	3	5	19	14	22	7.1	BRI-7085
	5.2	3.5	5.5	10	1	6	3	5	19	14	22	7.1	BRI-7086
	5.2	3.5	5.5	8	1	6	3	9	22	14	26	7.1	BRI-7087
	5.2	3.5	5.5	12	1	6	2	6	20	14	22	7.1	BRI-7088
	6.4	3.5	5.5	12	1	6	2	6	20	14	22	7.1	BRI-7089
	8.2	3.5	5.5	12	1	6	2	6	20	14	22	7.1	BRI-7090
	5.2	3.5	5.5	12	1	6	3	7	22	14	24	7.1	BRI-7091
	6.4	3.5	5.5	12	1	6	3	7	22	14	24	7.1	BRI-7092
	6.4	3.5	5.5	14	1	6	2	10.5	25.5	14	26.5	7.1	BRI-7093
	8.2	3.5	5.5	14	1	6	2	10.5	25.5	14	26.5	7.1	BRI-7094
	9.7	3.5	5.5	14	1	6	2	10.5	25.5	14	26.5	7.1	BRI-7095
	8.2	3.5	5.5	16	1	6	3	13	30	14	30	7.1	BRI-7096
	10.2	3.5	5.5	16	1	6	3	13	30	14	30	7.1	BRI-7097
	8.2	3.5	5.5	18	1	6	3	12	30	14	30	7.1	BRI-7098
	10.2	3.5	5.5	18	1	6	3	12	30	14	29	7.1	BRI-7099
	12.7	3.5	5.5	18	1	6	3	12	30	14	29	7.1	BRI-7100

FORK TYPE TINNED COPPER CABLE TERMINAL ENDS

MATERIAL : ELECTROLYTIC COPPER

FINISH : ELECTRO TINNED



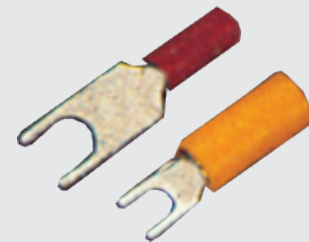
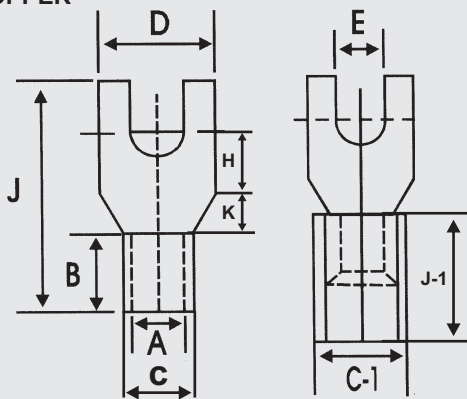
CABLE MM ²	STUD Ø E	DIMENSIONS (MM)									PROD. CODE
		A	C	D	F	B	K	H	L-1	J	
1.5	5.1	1.6	3.2	8	0.8	5	2	10	17	21	BF - 7214
1.5	3.5	1.6	3.2	6.8	0.8	4	-	4.8	8.8	13	BF - 7249
1.5	3	2	2.8	6.2	0.4	5	2.4	3.1	10.5	13	BF - 7250
2.5	3.5	2.3	3.9	6.5	0.8	5	2.5	4.3	11.8	15	BF - 7251
2.5	5	2.6	4.6	10.6	1	6.2	-	6.2	12.4	21	BF - 7280
4 - 6	3.1	3.5	5.5	6	1	6	-	5.5	11.5	15	BF - 7252
4 - 6	3.5	3.5	5.5	6	1	6	-	5	11	15	BF - 7253
10	6.5	4.5	6.9	16	1.2	8	-	11	19	27	BF - 7254
10	8.2	4.5	6.9	16	1.2	8	-	11	19	27	BF - 7255

FORK TYPE INSULATED TINNED COPPER CABLE TERMINAL ENDS

MATERIAL : ELECTROLYTIC COPPER

FINISH : ELECTRO TINNED

COLOUR CODING OF INSULATION SLEEVE	
SIZE	COLOUR
1.5	RED
2.5	BLUE
4 - 6	YELLOW

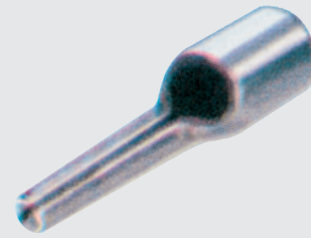
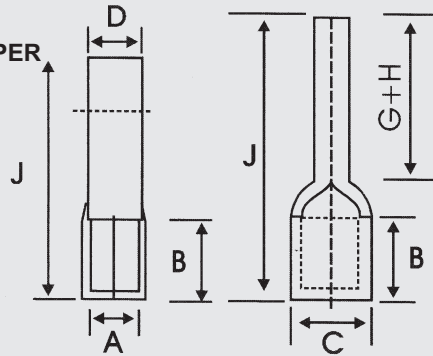


CABLE MM ²	STUD Ø E	DIMENSIONS (MM)										PROD. CODE	
		A	C	D	F	B	K	H	J	C-1	J-1		L-3
1.5	5.1	1.6	3.2	8	0.8	5	2	10	21	4.8	10	27	BFI - 7925
1.5	3.5	1.6	3.2	6.8	0.8	4	-	4.8	13	4.8	10	20.8	BFI - 7926
1.5	3	2	2.8	6.2	0.4	5	2.4	3.1	13	4.8	10	20.5	BFI - 7927
2.5	3.5	2.3	3.9	6.5	0.8	5	-	4.3	15	5.5	10	21.8	BFI - 7928
2.5	5	2.6	4.6	10.6	1	6.2	2.5	6.2	21	5.5	10	20	BFI - 7929
4-6	3.1	3.5	5.5	6	1	6	-	5.5	15	7.1	14	27.5	BFI - 7930
4-6	3.5	3.5	5.5	6	1	6	-	5	15	7.1	14	27	BFI - 7931
10	6.5	4.5	6.9	16	1.2	8	-	11	27	7.9	16	35	BFI - 7932
10	8.2	4.5	6.9	16	1.2	8	-	11	27	7.9	16	35	BFI - 7933

PIN TYPE TINNED COPPER CABLE TERMINAL ENDS

MATERIAL : ELECTROLYTIC COPPER

FINISH : ELECTRO TINNED



CABLE MM ²	STUD Ø E	DIMENSIONS (MM)								PROD. CODE
		A	C	D	F	B	G+H	J	Type	
1.5	-	1.6	3.2	1.9	0.8	5	10	17	I	BP - 9
2.5	-	2.3	3.9	1.9	0.8	5	10	17	I	BP - 1
2.5	-	2.3	3.9	3.1	0.8	5	10	17	II	BP - 2
4	-	2.9	4.9	2.7	1	6	10	20	I	BP - 3
4	-	3.6	5.6	5.1	1	6	10	20	II	BP - 4
6	-	3.6	5.6	2.7	1	6	10	20	I	BP - 5
6	-	4	6	2.7	1	6	10	20	I	BP - 6
10	2.4	4.5	6.7	4.3	1.1	8	12	22	III	BP - 7
16	2.6	5.8	8.2	5.5	1.2	10	13	26	III	BP - 8

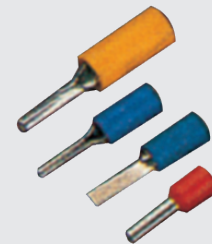
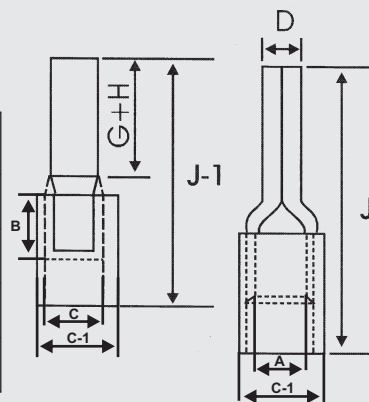
PIN TYPE INSULATED TINNED COPPER CABLE TERMINAL ENDS

MATERIAL : ELECTROLYTIC COPPER

FINISH : ELECTRO TINNED

COLOUR CODING OF INSULATION SLEEVE

SIZE	COLOUR
1.5	RED
2.5	BLUE
4- 6	YELLOW

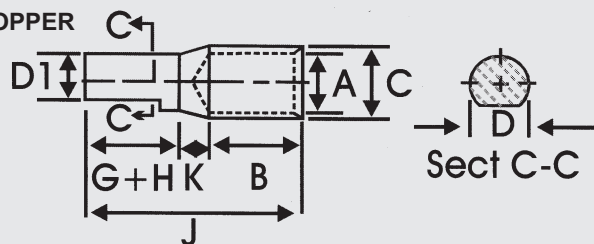


CABLE MM ²	STUD Ø E	DIMENSIONS (MM)									PROD. CODE	
		A	C	D	F	B	G+H	J	C-1	J-1		Type
1.5	-	1.6	3.2	1.9	0.8	5	10	17	4.8	10	I	BPI - 17
2.5	-	2.3	3.9	1.9	0.8	5	10	17	5.5	10	I	BPI - 18
2.5	-	2.3	3.9	3.1	0.8	5	10	17	5.5	10	II	BPI - 19
4	-	2.9	4.9	2.7	1	6	10	20	7.1	14	I	BPI - 20
4	-	3.6	5.6	5.1	1	6	10	20	7.1	14	II	BPI - 21
6	-	3.6	5.6	2.7	1	6	10	20	7.1	14	I	BPI - 22
6	-	4	6	2.7	1	6	10	20	7.9	14	I	BPI - 23
10	2.4	4.5	6.7	4.3	1.1	8	12	22	7.9	16	III	BPI - 24
16	2.6	5.8	8.2	5.5	1.2	10	13	26	10	20	III	BPI - 25

COPPER REDUCER TYPE TERMINAL ENDS

MATERIAL : ELECTROLYTIC COPPER

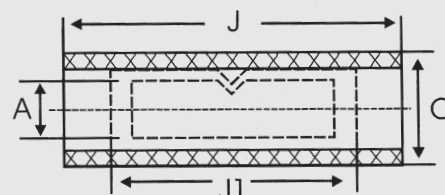
FINISH : ELECTRO TINNED



CABLE MM ²	DIMENSIONS (MM)								PROD. CODE
	A	C	D	D1	B	K	G + H	J	
2.5	2.5	4.7	3.8	3.3	6	4	10	20	BPC - 7
4	2.8	4.7	3.8	3.3	6	4	10	20	BPC - 16
6	3.1	4.7	3.8	3.3	6	4	10	20	BPC - 18
10	3.8	5.5	3.8	3.3	9	4	10	23	BPC - 20
16	5.3	7.1	3.8	3.3	12	5	13	30	BPC - 2
25	7	9	6	5.5	12	5	15	32	BPC - 25
25	7	9	7.5	6.5	12	5	20	37	BPC - 3
35	8	10	7.5	6.5	12	5	20	37	BPC - 4
50	9.2	11.2	7.5	6.5	16	5	20	41	BPC - 26
70	11.5	13.8	7.5	6.5	18	5	20	43	BPC - 27
70	11.5	13.8	11.5	10.5	18	5	25	48	BPC - 6
70	11.5	13.8	11.5	10.5	18	5	32	55	BPC - 28
95	12.8	15.6	11.5	10.5	20	6	25	51	BPC - 29
95	12.8	15.6	7.5	6.5	20	6	22	48	BPC - 31
95	12.8	15.6	15.6	14	20	6	27	53	BPC - 8
120	14.8	17.8	11.5	10.5	22	6	25	53	BPC - 32
120	14.8	17.8	7.5	6.5	22	6	22	50	BPC - 34
120	14.8	17.8	11.5	10.5	22	6	32	60	BPC - 35
150	16	19.6	11.5	10.5	26	6	32	64	BPC - 37
185	18	22	11.5	10.5	32	6	32	70	BPC - 38
240	22	26	16	15	38	8	42	88	BPC - 44
300	24	28.7	16	15	42	8	42	92	BPC - 45
400	28	33.2	15.6	14	46	12	32	90	BPC - 48

BUTT CONNECTORS

CONDUCTOR



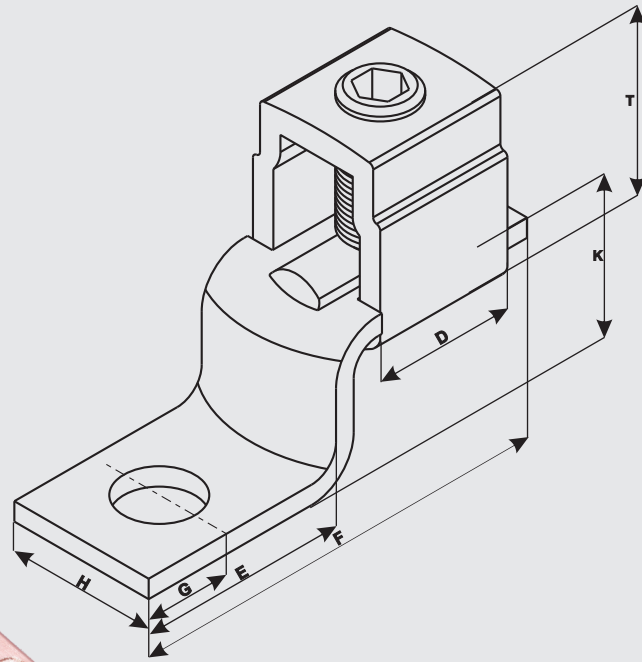
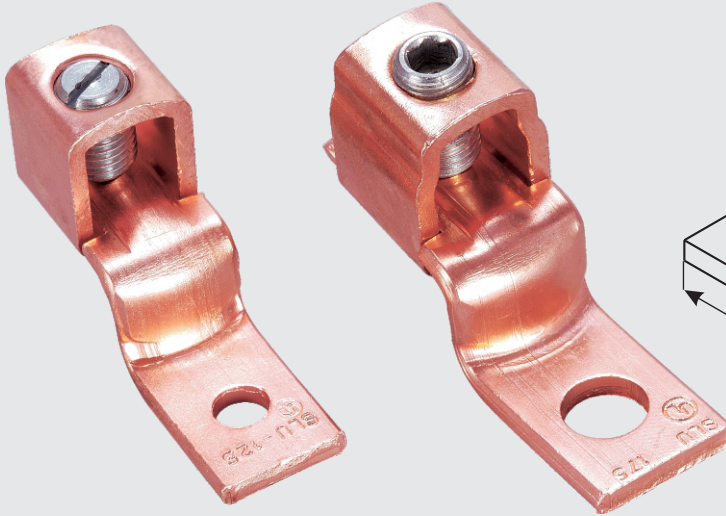
MM ²	A	C	J1	J	PROD. CODE
1.50	1.80	3.70	12.00	20.00	BTIC - 1.5
2.50	2.40	4.00	15.00	25.00	BTIC - 2.5
4.00	3.10	3.80	15.00	25.00	BTIC - 4
6.00	3.80	5.50	15.00	27.00	BTIC - 6

COPPER MECHANICAL LUGS

MATERIAL : ELECTROLYTIC COPPER

FINISH : UNTINNED

UL - LISTED

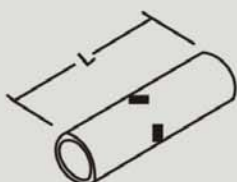


COND. RANGE	SCREW HEX SIZE	DIMENSIONS (MM)							PROD. CODE
		F	E	D	G	K	H	T	
10-14	SLOTTED	26	12	7	5.3	6.5	7.95	9.5	BUL-25
6-14 & LIST COMB.(A)	SLOTTED	31.5	15	11	5.6	11	9.5	12.3	BUL-35
2-8 & LIST COMB.(B)	SLOTTED	39.5	20.5	12.7	6.35	14.2	12	16.3	BUL-70
1/0-6	SLOTTED	50.5	26	15.5	10.75	19	15.85	23.3	BUL-125
3/0-4	3/16"	56	30	18	11	20	19	26.5	BUL-175
4/0-2	7/32"	65	33.8	24.5	13	26	25.2	29.75	BUL-225
350 MCM -1/0	8 MM	72	34	31	13.10	26.2	25.2	35.7	BUL-300
500 MCM -1/0	8 MM	104	56.5	36	23	35.5	38	41	BUL-400
1000 MCM -600 MCM	3/8"	123	62	47	28.5	42	50	59	BUL-650

(A) - U.L. Listed wire combinations: (2) # 10, (2) # 12, (2) # 14, (1) # 12 and (1) # 14, (1) # 10 and (1) # 12

(B) - U.L. Listed wire combinations: (1) # 8 and (1) # 4, (1) # 8 and (1) # 6 (2) # 4, (3) # 8, (3) # 6, (2) # 8 and (1) # 4, (2) # 8 and (1) # 6, (1) # 6 and (1) # 4, (2) # 6

BCC 1000Series Copper Connectors Standard - Barrel up to 35kV

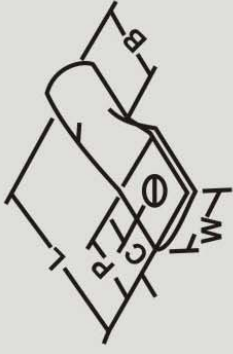


PRODUCT NUMBER	COLOR CODE	WIRE SIZE	DIMENSIONS		
			I.D.	O.D.	L
BCC10001	Blue	6AWG	0.196" (5.0MM)	0.290" (7.3MM)	1.750" (44.4MM)
BCC10002	Gray	4AWG	0.247" (6.2MM)	0.340" (8.6MM)	1.750" (44.4MM)
BCC10003	Brown	2AWG	0.307" (7.8MM)	0.416" (10.6MM)	1.880" (47.6MM)
BCC10004	Green	1AWG	0.358" (9.1MM)	0.462" (11.7MM)	1.880" (47.6MM)
BCC10005	Pink	1/0AWG	0.394" (10.0MM)	0.512" (13.0MM)	1.880" (47.6MM)
BCC10006	Black	2/0 AWG	0.439" (11.2MM)	0.560" (14.2MM)	2.000" (50.8MM)
BCC10007	Orange	3/0 AWG	0.490" (12.4MM)	0.617" (15.7MM)	2.130" (54.0MM)
BCC10008	Purple	4/0 AWG	0.548" (13.9MM)	0.687" (17.4MM)	2.130" (54.0MM)
BCC10009	Yellow	250 Kcmil	0.595" (15.1MM)	0.750" (19.1MM)	2.250" (57.2MM)
BCC10010	White	300Kcmil(150mm ²)	0.650" (16.5MM)	0.813" (20.7MM)	2.250" (57.2MM)
BCC10011	Red	350Kcmil	0.700" (17.8MM)	0.875" (22.2MM)	2.380" (60.4MM)
BCC10014	Brown	500Kcmil	0.836" (21.2mm)	1.060" (27.0MM)	2.880" (73.0MM)
BCC10019	—	750Kcmil	1.031" (26.2MM)	1.299" (33.0MM)	3.380" (85.8MM)
BCC10024	—	1000 Kcmil (500mm ²)	1.173" (29.8MM)	1.500" (38.1MM)	3.880" (98.4MM)

BCC 1100Series Copper Connectors Long -Barrel up to 35kV

PRODUCT NUMBER	COLOR CODE	WIRE SIZE	DIMENSIONS		
			I.D.	O.D.	L
BCC11006	Black	2/0 AWG	0.439" (11.2MM)	0.560" (14.2MM)	3.130" (79.4MM)
BCC11007	Orange	3/0 AWG	0.490" (12.4MM)	0.617" (15.7MM)	3.130" (79.4MM)
BCC11008	Purple	4/0 AWG	0.548" (13.9MM)	0.687" (17.4MM)	3.380" (85.8MM)
BCC11009	Yellow	250 Kcmil	0.595" (15.1MM)	0.750" (19.1MM)	3.380" (85.8MM)
BCC11010	White	300Kcmil(150mm ²)	0.650" (16.5MM)	0.813" (20.7MM)	4.130" (104.8MM)
BCC11011	Red	350Kcmil	0.700" (17.8MM)	0.875" (22.2MM)	4.130" (104.8MM)
BCC11014	Brown	500Kcmil	0.836" (21.2mm)	1.060" (27.0MM)	4.630" (117.5MM)
BCC11019	—	750Kcmil	1.031" (26.2MM)	1.299" (33.0MM)	5.880" (149.2MM)
BCC11024	—	1000 Kcmil (500mm ²)	1.173" (29.8MM)	1.500" (38.1MM)	6.130" (155.6MM)

BCL 30000 Series Copper Lugs-one Hole up to 35kV



PRODUCT NUMBER	COLOR CODE	STANDARD WIRE SIZE	STUD SIZE	DIMENSIONS					
				I.D.	L	B	W	P	C
BCL30014	Blue	6AWG	10" (5MM)	0.196" (5.0MM)	1.780" (45.2MM)	0.750" (19.1MM)	0.500" (12.7MM)	0.750" (19.1MM)	0.375" (9.5MM)
BCL30015	Blue	6AWG	1/4" (6MM)	0.196" (5.0MM)	1.780" (45.2MM)	0.750" (19.1MM)	0.500" (12.7MM)	0.750" (19.1MM)	0.375" (9.5MM)
BCL30016	Blue	6AWG	5/16" (8MM)	0.196" (5.0MM)	1.780" (45.2MM)	0.750" (19.1MM)	0.435" (11.0MM)	0.750" (19.1MM)	0.375" (9.5MM)
BCL30018	Gray	4AWG	10" (5MM)	0.247" (6.3MM)	1.940" (49.3MM)	0.750" (19.1MM)	0.485" (12.3MM)	0.890" (22.6MM)	0.375" (9.5MM)
BCL30019	Gray	4AWG	1/4" (6MM)	0.247" (6.3MM)	1.940" (49.3MM)	0.750" (19.1MM)	0.485" (12.3MM)	0.890" (22.6MM)	0.375" (9.5MM)
BCL30021	Gray	4AWG	3/8" (10MM)	0.247" (6.3MM)	1.940" (49.3MM)	0.750" (19.1MM)	0.590" (15.1MM)	0.890" (22.6MM)	0.375" (9.5MM)
BCL30022	Brown	2AWG	1/4" (6MM)	0.307" (7.8MM)	1.970" (50.0MM)	0.810" (20.7MM)	0.630" (15.9MM)	0.890" (22.6MM)	0.375" (9.5MM)
BCL30023	Brown	2AWG	5/16" (8MM)	0.307" (7.8MM)	1.970" (50.0MM)	0.810" (20.7MM)	0.630" (15.9MM)	0.890" (22.6MM)	0.375" (9.5MM)
BCL30024	Brown	2AWG	3/8" (10MM)	0.307" (7.8MM)	1.970" (50.0MM)	0.810" (20.7MM)	0.630" (15.9MM)	0.890" (22.6MM)	0.375" (9.5MM)
BCL30027	Green	1AWG	5/16" (8MM)	0.358" (9.1MM)	1.970" (50.0MM)	0.810" (20.7MM)	0.690" (17.4MM)	0.750" (19.1MM)	0.375" (9.5MM)
BCL30028	Green	1AWG	3/8" (10MM)	0.358" (9.1MM)	1.970" (50.0MM)	0.810" (20.7MM)	0.690" (17.4MM)	0.750" (19.1MM)	0.375" (9.5MM)
BCL30031	Pink	1/0AWG	5/16" (8MM)	0.394" (10.0MM)	2.160" (54.8MM)	0.810" (20.7MM)	0.750" (19.0MM)	0.890" (22.6MM)	0.375" (9.5MM)
BCL30032	Pink	1/0AWG	3/8" (10MM)	0.394" (10.0MM)	2.160" (54.8MM)	0.810" (20.7MM)	0.750" (19.0MM)	0.890" (22.6MM)	0.375" (9.5MM)
BCL30036	Black	2/0AWG	3/8" (10MM)	0.439" (11.2MM)	2.370" (60.2MM)	0.870" (22.2MM)	0.810" (20.7MM)	1.110" (28.2MM)	0.375" (9.5MM)
BCL30041	Orange	3/0AWG	1/2" (12MM)	0.490" (12.4MM)	2.630" (66.8MM)	0.940" (23.8MM)	0.910" (23.0MM)	1.110" (28.2MM)	0.531" (13.5MM)
BCL30045	Purple	4/0AWG	1/2" (12MM)	0.548" (13.9MM)	2.600" (65.9MM)	0.970" (24.6MM)	1.000" (25.4MM)	1.110" (28.2MM)	0.531" (13.5MM)

BCL 31000 Series Copper Lugs-one Hole Long Barrel up to 35 V

PRODUCT NUMBER	COLOR CODE	STANDARD WIRE SIZE	STUD SIZE	DIMENSIONS					
				I.D.	L	B	W	P	C
BCL31036	Black	2/0AWG	3/8" (10.0MM)	0.439" (10MM)	2.840" (11.2MM)	1.440" (36.5MM)	0.812" (36.5MM)	0.890" (20.6MM)	0.375" (22.6MM)
BCL31041	Orange	3/0AWG	1/2" (12MM)	0.490" (12.4MM)	3.130" (79.5MM)	1.440" (36.5MM)	0.910" (23.0MM)	1.110" (28.2MM)	0.531" (13.5MM)
BCL31045	Purple	4/0AWG	1/2" (12MM)	0.548" (13.9MM)	3.320" (84.4MM)	1.560" (39.7MM)	1.000" (25.4MM)	1.110" (28.2MM)	0.531" (13.5MM)
BCL31049	Yellow	250Kcmil	1/2" (12MM)	0.590" (15.1MM)	3.380" (85.8MM)	1.500" (38.0MM)	1.130" (28.6MM)	1.110" (28.2MM)	0.531" (13.5MM)
BCL31053	White	300Kcmil(150mm ²)	1/2" (12MM)	0.650" (16.5MM)	3.780" (96.0MM)	1.940" (49.2MM)	1.220" (30.9MM)	1.110" (28.2MM)	0.531" (13.5MM)
BCL31056	Red	350 Kcmil	1/2" (12MM)	0.700" (17.8MM)	3.840" (97.5MM)	1.940" (49.2MM)	1.270" (32.3MM)	1.110" (28.2MM)	0.531" (13.5MM)
BCL31060	Blue	400Kcmil	1/2" (12MM)	0.762" (19.3MM)	4.160" (105.7MM)	2.000" (50.8MM)	1.410" (35.8MM)	1.340" (34.2MM)	0.650" (16.66MM)
BCL31066	Brown	500Kcmil (12mm)	1/2" (12MM)	0.836" (21.2MM)	4.500" (114.3MM)	2.190" (55.6MM)	1.530" (38.9MM)	1.340" (34.2MM)	0.660" (16.8MM)
BCL31067	Brown	500Kcmil	5/8" (16MM)	0.836" (21.2MM)	4.500" (114.3MM)	2.190" (55.6MM)	1.530" (38.9MM)	1.340" (34.2MM)	0.660" (16.8MM)
BCL31068	Green	600Kcmil	1/2" (12MM)	0.920" (23.4MM)	5.120" (130.0MM)	2.690" (68.2MM)	1.690" (42.9MM)	1.750" (44.4MM)	0.870" (22.2MM)

BCL 31000 Series Copper Lugs- two Hole Long Barrel up to 35kV



PRODUCT NUMBER	COLOR CODE	WIRE SIZE	STUD SIZE	DIMENSIONS						
				I.D.	L	B	W	P	C	C1
BCL31145	Purple	4/0AWG	1/2" (12MM)	0.548" (13.9MM)	5.160" (131.0MM)	1.560" (39.7MM)	1.000" (25.4MM)	3.000" (76.2MM)	0.630" (15.9MM)	1.750" (44.4MM)
BCL31149	Yellow	250 Kcmil	1/2" (12MM)	0.595" (15.1MM)	5.310" (134.9MM)	1.560" (39.7MM)	1.130" (28.6MM)	3.000" (76.2MM)	0.630" (15.9MM)	1.750" (44.4MM)
BCL31153	White	300Kcmil(150mm ²)	1/2" (12MM)	0.650" (16.5MM)	5.750" (146.0MM)	1.940" (49.2MM)	1.220" (31.0MM)	3.000" (76.2MM)	0.630" (15.9MM)	1.750" (44.4MM)
BCL31156	Red	350Kcmil	1/2" (12MM)	0.700" (17.8MM)	5.750" (146.0MM)	1.940" (49.2MM)	1.310" (33.4MM)	3.000" (76.2MM)	0.630" (15.9MM)	1.750" (44.4MM)
BCL31160	Blue	400Kcmil	1/2" (12MM)	0.762" (19.35MM)	6.000" (152.4MM)	2.120" (53.8MM)	1.410" (35.8MM)	3.090" (78.5MM)	0.620" (15.7MM)	1.750" (44.4MM)
BCL31166	Brown	500Kcmil	1/2" (12MM)	0.836" (21.2MM)	6.160" (156.4MM)	2.190" (55.6MM)	1.530" (38.9MM)	3.000" (76.2MM)	0.630" (15.9MM)	1.750" (44.4MM)
BCL31168	Green	600Kcmil	1/2" (12MM)	0.923" (23.44MM)	6.720" (170.6MM)	2.620" (66.5MM)	1.690" (42.9MM)	3.120" (79.2MM)	0.620" (15.7MM)	1.750" (44.4MM)
BCL31172	Black	750Kcmil	1/2" (12MM)	1.031" (26.2MM)	7.000" (177.8MM)	2.810" (71.5MM)	1.720" (43.7MM)	3.000" (76.2MM)	0.630" (15.9MM)	1.750" (44.4MM)
BCL31178	—	1000Kcmil(500mm ²)	1/2" (12MM)	1.173" (29.3MM)	7.280" (184.9MM)	2.940" (74.6MM)	1.720" (43.7MM)	3.000" (76.2MM)	0.630" (15.9MM)	1.750" (44.4MM)

Street Light Breaker

Design :

"BIAX" Street lighting Cut-outs in Sheet Steel Construction have been specially designed, keeping in view the application and climatic condition in the Gulf region.

In addition to meeting all the technical requirements, special care has been taken to, ensure excellent corrosion resistance.

To facilitate easy installation and connection of Cables, requisite number of Knock-out holes are provided along with prescribed type of Cable Glands of required size.

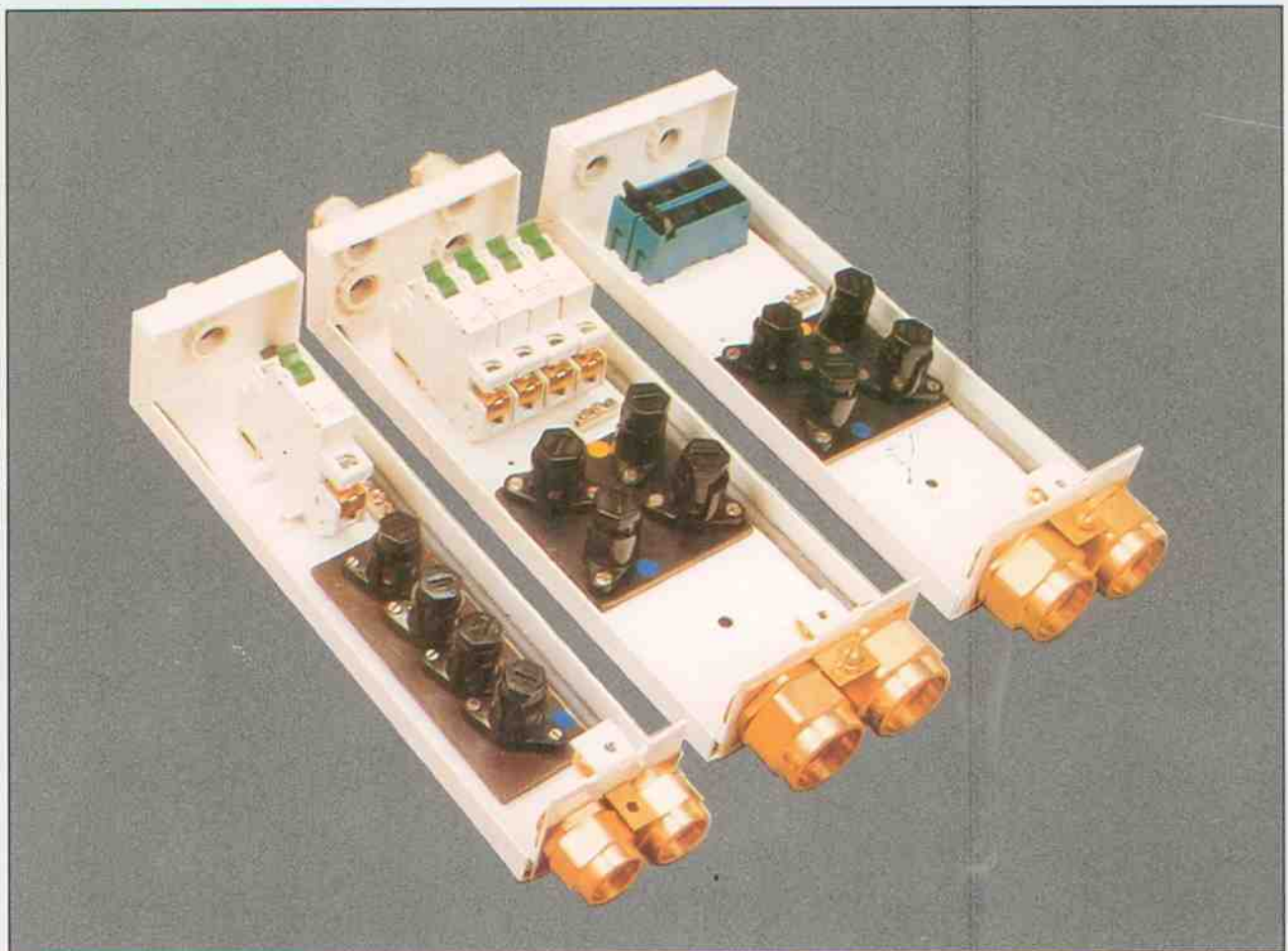
During wiring / installation the Cover can be completely opened by removing a single screw.

Construction :

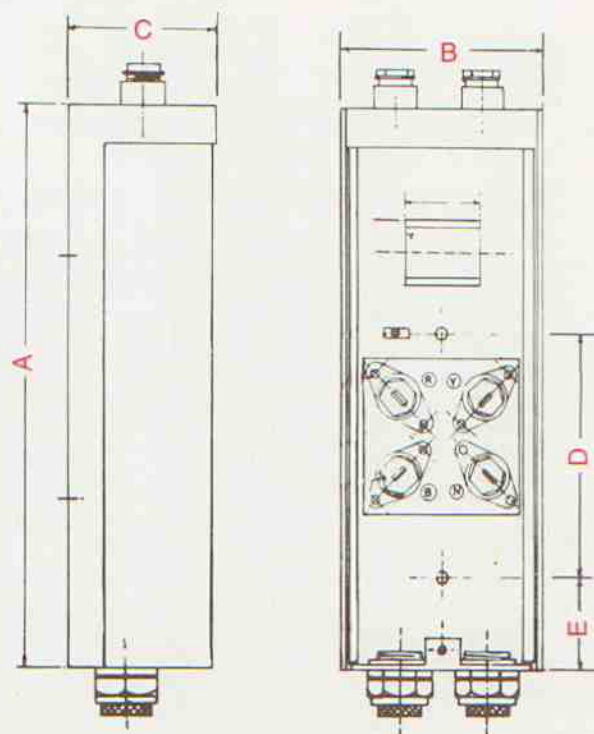
Street lighting Cut-outs are manufactured with precision, out of extra thick, best quality CRCA Steel Sheets, Galvanised and Powder Coated for smooth finish and protection against atmosphere. The cut-outs are tested and approved as per IP 44 and IP 54.

Range :

BIAX Street lighting Cut-outs are available in a complete range from one outgoing type to six outgoing type either with Fuse Carrier or MCB so as to fulfil all requirements.

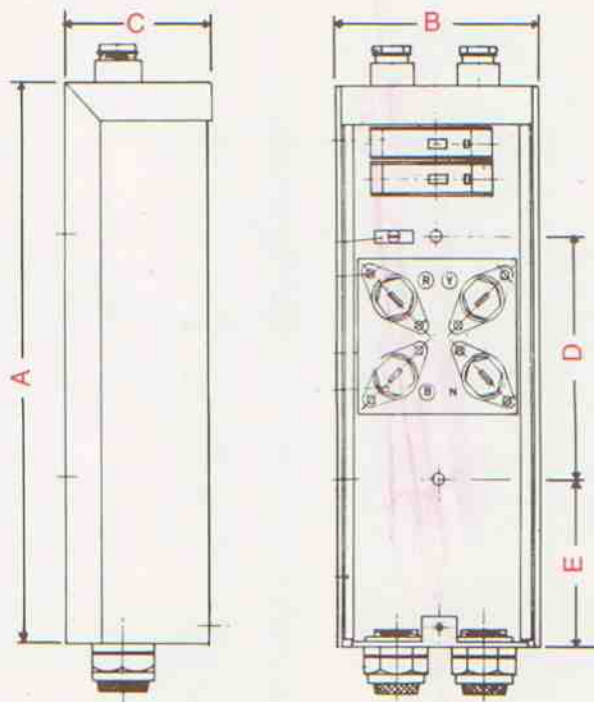


MCB TYPE CUT-OUTS (01)



TYPE REFERENCE	NO. OF OUTGOINGS	DIMENSIONS					KNOCKOUT HOLES		CABLE SIZE
		A	B	C	D	E	TOP	BOTTOM	
BCO 0101-25	1	320	115	65	130	57	1 x 19 mm Ø	2 x 25 mm Ø	16 mm ²
BCO 0101-32	1	320	115	65	130	57	1 x 19 mm Ø	2 x 25 mm Ø	25 mm ²
BCO 0102-25	2	320	115	65	130	57	2 x 19 mm Ø	2 x 32 mm Ø	16 mm ²
BCO 0102-32	2	320	115	65	130	57	2 x 19 mm Ø	2 x 25 mm Ø	25 mm ²
BCO 0104-25	4	320	115	65	130	57	4 x 19 mm Ø	2 x 25 mm Ø	16 mm ²
BCO 0104-32	4	320	115	65	130	57	4 x 19 mm Ø	2 x 32 mm Ø	25 mm ²
BCO 0106-32	6	350	120	65	130	57	6 x 19 mm Ø	2 x 32 mm Ø	25 mm ²
BCO 0102-25 [3]	2	320	115	89	130	57	2 x 19 mm Ø	3 x 25 mm Ø	16 mm ²
BCO OIS 01-25	1	300	80	65	-	-	1 x 19 mm Ø	2 x 25 mm Ø	16 mm ²
BCO OIS 02-25	2	300	80	65	-	-	2 x 19 mm Ø	2 x 25 mm Ø	16 mm ²

FUSE TYPE CUT-OUTS (02)



TYPE REFERENCE	NO. OF OUTGOINGS	DIMENSIONS					KNOCKOUT HOLES		CABLE SIZE
		A	B	C	D	E	TOP	BOTTOM	
BCO 0201-25	1	320	115	65	130	57	1 x 19 mm Ø	2 x 25 mm Ø	16 mm ²
BCO 0201-32	1	320	115	65	130	57	1 x 19 mm Ø	2 x 32 mm Ø	25 mm ²
BCO 0202-25	2	320	115	65	130	57	2 x 19 mm Ø	2 x 25 mm Ø	16 mm ²
BCO 0202-32	2	320	115	65	130	57	2 x 19 mm Ø	2 x 32 mm Ø	25 mm ²
BCO 0204-25	4	320	115	65	130	57	4 x 19 mm Ø	2 x 25 mm Ø	16 mm ²
BCO 0204-32	4	320	115	65	130	57	4 x 19 mm Ø	2 x 32 mm Ø	25 mm ²
BCO 0206-32	6	350	120	65	130	57	6 x 19 mm Ø	2 x 32 mm Ø	25 mm ²
BCO 0202-25 [3]	2	320	115	89	130	57	2 x 19 mm Ø	3 x 25 mm Ø	16 mm ²
BCO 02S01-25	1	300	80	65	-	-	1 x 19 mm Ø	2 x 25 mm Ø	16 mm ²
BCO 02S02-25	2	300	80	65	-	-	2 x 19 mm Ø	2 x 25 mm Ø	16 mm ²

Sizes given are for general information and may be changed to improve upon the design aspect.

Custom built Cut-outs can also be supplied against specific requirements either with BW type or CW type glands.

EARTHING & LIGHTNING PROTECTION SYSTEM



Marching towards safer future



EARTHING SYSTEM



“BIAX” COPPER BONDED EARTH ROD & ACCESSORIES

“BIAX” COPPER BONDED EARTH RODS are manufactured from 99.9% pure electrolytic copper molecularly bonded onto a steel core in accordance with national and international standards. There is no metal interface, so dissimilar metal reaction cannot occur and the copper cannot be separated from the steel.

The core is of low carbon steel of grade 080A20 of BS 970 and has high tensile strength of 600 N/mm²

The copper covering is maintained at the root of the thread as, the threads are rolled onto the rod which ensures that an even copper covering is maintained. Rolled threads also give strength greater than cut threads.

ORDERING INFORMATION

Cat. No..	Diameter in mm	Thread Dia	Shank Dia
BCBR9512	9.5 X 1200	-	9.5
BCBR1612	16 X 1200	5/8"	14.2
BCBR1615	16 X 1200	5/8"	14.2
BCBR1618	16 X 1800	5/8"	14.2
BCBR1624	16 X 2400	5/8"	14.2
BCBR1630	16 X 3000	5/8"	14.2
BCBR2012	16 X 1200	3/4"	17.2
BCBR2015	16 X 1500	3/4"	17.2
BCBR2018	16 X 1800	3/4"	17.2
BCBR2024	16 X 2400	3/4"	17.2
BCBR2030	16 X 3000	3/4"	17.2

“BIAX” EARTHING CLAMPS

High copper content alloy body (Gunmetal), having Phosphor Bronze or Brass screw, Corrossion resistant. A good electrical contact ensured as the strength of the screw enables it to be fully tightened.

“BIAX” COUPLING

Coupling is highly corrossion resistant and high strength. High copper alloy coupling (Brass or Phosphor Bronze) counter bored to completely enclose threads, protecting them from damage and corrossion.

Rod to rod or Rod to driving stud contact can be achieved ensuring that the driving force is directly applied. The coupling is strong enough to transfer the force while maintaining good electrical contact, even if loosening occurs during driving.

“BIAX” DRIVING STUD

High strength steel driving head can be used many times over, and is suitable for use with power hammers.

EARTHING SYSTEM



“BIAX” SOLID COPPER ROD

Solid copper earth rod are used where the soil conditions are extremely aggressive such as soils with high salt content. Highly corrosion resistant.

ORDERING INFORMATION

Cat. No..	Diameter in mm	Shank Dia
BCR1612	16 X 1200	16
BCR1615	16 X 1500	16
BCR2012	20 X 1500	20
BCR2015	20 X 1500	20

“BIAX” DRIVING STUD

Manufactured from high tensile steel. It can be re-usable.



“BIAX” DOWEL

Manufactured from Brass and also available in Phosphorbronze.



“BIAX” DRIVING SPIKE

Manufactured from Steel to BS970, Grade 070M20.



“BIAX” ROD TO TAPE CLAMP

Manufactured from Gunmetal or Naval Brass with Naval Brass or Stainless steel bolt.

ORDERING INFORMATION

Cat. No..	Max Conductor Size mm
BRTC 1	26 X 12
BRTC 2051	51 X 12
BRTC 2526	26 X 10
BRTC 1220	26 X 10

“BIAX” ROD TO CABLE CLAMP

Manufactured from Gunmetal or Naval Brass with Naval Brass or Stainless steel bolt to suit various dia. rod and cables.

ORDERING INFORMATION

Cat. No..	Nominal Rod Dia.		Conductor Range mm ²
	Inch	mm	
BC38	3/8	9.5	6-35
BC12	1/2	12.5	16-50
BC58	5/8	16	16-70
BC34	3/4	20	16-95
BC20	1	25	70-120

EARTH ROD ACCESSORIES



“BIAX” ‘U’ BOLT ROD CLAMP (TYPE UB)

‘U’bolts are manufactured from Copper with Gunmetal back plates for various diameters.

‘U’ BOLTS THREADED M10

ORDERING INFORMATION

Cat. No..	Nominal Rod - Dia. inch	HoleCentres - mm
BUB16	5/8	37
BUB20	1/4	37
BUB25	1	37

“BIAX” ROD TO CABLE CLAMP (TYPE GUV)

Manufactured from Copper with Gunmetal plate for various pipe diameter.

ORDERING INFORMATION

Cat. No..	Nominal Rod Dia.		Conductor Range mm ²
	Inch	mm	
BGUV16	5/8	16	16 - 95
BGUV20	3/4	20	16 - 70

“BIAX” ROD TO CABLE LUG CLAMP

Manufactured from Gunmetal or Brass.

ORDERING INFORMATION

Cat. No..	Nominal Rod Dia.		Rod Type
	Inch	mm	
BSCR38	3/8	9.5	Copper bond
BSCR58	5/8	16	Copper bond
BSCR15	5/8	15	Solid copper
BSCR34	3/4	20	Copper bond
BSCR20	3/4	20	Solid copper

“BIAX” ‘B’ BOND

Manufactured from Gunmetal or Aluminium used for bonding tape to flat metal surfaces.

ORDERING INFORMATION

Cat. No..	Max. Tape - Width mm	Conductor Material	Bolt Size
BB BOND	26	Copper	M10
BA BOND	26	Aluminium	M10

EARTH ROD ACCESSORIES



“BIAX” RWP BOND

Manufactured from Gunmetal or Aluminium suitable for bonding tape to pipes, handrails, etc.

ORDERING INFORMATION

Cat. No..	Max. Tape - Width mm	Conductor Material	Bolt Size
BRWP	26	Copper	M10
BARWP	26	Aluminium	M10



“BIAX” WATER MAIN BOND

Manufactured from Gunmetal and is used for bonding Copper tape to water main pipes.

ORDERING INFORMATION

Cat. No..	Max. Tape Width mm	Conductor Material
BWPB010	26	Copper



“BIAX” SQUARE TAPE CLAMP

Manufactured from Gunmetal, Aluminium or Naval Brass for forming straight through, cross or tee joints in tape and bar.

ORDERING INFORMATION

Cat. No..	Conductor Size mm	Conductor Material
BSTC253	25 X 3	Copper
BSTC256	25 X 6	Copper
BSTC506	50 X 6	Copper



“BIAX” EARTH POINTS

Manufactured from Gunmetal. This unit provides an earthing point when cast into concrete structure where reinforcing bars are to be part of the earthing and lighting systems.

ORDERING INFORMATION

Cat. No..	No. of M8 Holes	Front Plate Conductor
BEPT04	4	No Front Plate
BEPT02	2	25 x 3 mm or 70 mm ²
BEPT01	1	25 X 3 mm or 8 mm Dia.

AIR TERMINALS AND FIXINGS



“BIAX” TAPER POINTED AIR ROD

It can be installed with or without multiple point (below) supplied with locknut.

ORDERING INFORMATION

Cat. No..	Rod length mm	Rod Dia. mm	Thread Dia mm	Material
BATR5016	500	15	16	Copper
BATR10016	1000	15	16	Copper
BATR20016	2000	15	16	Copper
BATRA5016	500	15	16	Aluminium
BATRA10016	1000	15	16	Aluminium



“BIAX” MULTIPLE POINT

Manufactured from Copper and for use with taper pointed Air Rods.

ORDERING INFORMATION

Cat. No..	Rod dia. mm	Material
BCMPR600	15	Copper



“BIAX” AIR TERMINAL BASE

Manufactured from Gunmetal.

ORDERING INFORMATION

Cat. No..	Rod Dia. mm	Thread Dia. mm	Maximum Conductor Width mm	Rod Material
BATBC15	15	16	25	Copper
BATBA15	15	16	25	Aluminium



“BIAX” RIDGE SADDLE

Manufactured from Gunmetal.

ORDERING INFORMATION

Cat. No..	Rod Dia. mm	Thread Dia. mm	Maximum Conductor Width mm	Rod Material
BRSC115	15	16	31	Copper

AIR TERMINALS AND ACCESSORIES



“BIAX” DC TAPE CLIP

Manufactured from high quality Copper and Aluminium alloys.
For Use With Bare Copper.

ORDERING INFORMATION

Cat. No..	Conductor Size mm	Cat. No. FOR USE WITH PVC COVERED COPPER	Conductor Size mm
BCC203	20 X 3	BPCC253	25 X 3
BCC253	25 X 3	BPCC256	25 X 6
BCC254	25 X 4	BPCC506	50 X 6
BCC256	25 X 6	FOR USE WITH LEAD COVERED COPPER	
BCC313	31 X 3	BLCC203	25 X 3
BCC316	31 X 6	FOR USE WITH BARE ALUMINIUM	
BCC383	38 X 3	BACC203	20 X 3
BCC385	38 X 5	BACC253	25 X 3
BCC386	38 X 6	BACC256	25 X 6
BCC503	50 X 3	BACC506	50 X 6
BCC504	50 X 4	FOR USE WITH PVC COVERED ALUMINIUM	
BCC506	50 X 6	BPACC253	25 X 3

“BIAX” ROD BRACKETS

Manufactured from Gunmetal and Aluminium supplied in set of 2.

ORDERING INFORMATION

Cat. No..	Air Rod Dia. mm	Rod Material
BCBR15	15	Copper
BABR15	15	Aluminium

“BIAX” ROD TO TAPE COUPLING

Manufactured from Gunmetal.

ORDERING INFORMATION

Cat. No..	Air Rod Dia. mm	Thread dia. mm	Rod Material
BRTTC15	15	16	Copper
BRTTA15	15	16	Aluminium

“BIAX” TAPE CLIP

Manufactured from Gunmetal. For Use With Bare Copper.

ORDERING INFORMATION

Cat. No..	Conductor Size mm
BTC 203	20 X 3
BTC 253	25 X 3
FOR USE WITH BARE ALUMINIUM	
BATC 203	20 X 3
BATC 253	25 X 3
FOR USE WITH PVC COVERED TAPE	
BPTC 253	25 X 3

JUNCTION AND TEST CLAMPS



“BIAX” SQUARE TAPE CLAMP

Manufactured from Gunmetal.

ORDERING INFORMATION

Cat. No..	Max. Conductor size - mm	Conductor Material
BSTC253	25 X 3	Copper
BSTC256	25 X 6	Copper
BSTC506	50 X 6	Copper
BSTA253	25 X 3	Alumimium

“BIAX” OBLONG TEST OR JUNCTION CLAMP

Manufactured from Gunmetal.

ORDERING INFORMATION

Cat. No..	Max. Conductor size - mm	Conductor Material
BOBC268	26 X 8	Copper
BOBA268	26 X 8	Alumimium

“BIAX” PLATE TYPE TEST CLAMP

Manufactured from Gunmetal.

ORDERING INFORMATION

Cat. No..	Max. Conductor size - mm	Conductor Material
BPTC253	25 X 3	Copper
BPTC256	25 X 6	Copper
BPTC506	50 X 6	Copper
BPTA253	25 X 3	Alumimium

“BIAX” SCREWDOWN TEST CLAMP

Manufactured from Gunmetal.

ORDERING INFORMATION

Cat. No..	Max. Conductor size - mm	Conductor Material
BSD268	26 X 8	Copper

“BIAX” HEAVYDUTY CAST CABLE SADDLE

Manufactured from Gunmetal.

ORDERING INFORMATION

Cat. No..	Max. Conductor size - mm	Conductor Material
BCS8	25 X 3	Copper
BAS8	25 X 6	Copper
BPTC506	50 X 6	Copper
BPTA253	25 X 3	Alumimium

EARTHING SYSTEM

CONDUCTORS

COPPER CABLE

Meets BS125/BS6360/AS1746/CEI1024-1

WITHOUT INSULATION

ORDERING INFORMATION

Reference code	Strand Description	Section mm ²	Packing	Unit weight kg.
BSC-EC-06	-	6	50m	-
BSC-EC-10	7 X 1.45	10	50m	0.12/m
BSC-EC-16	7 X 1.60	16	50m	0.13/m
BSC-EC-25	7 X 2.14	25	50m	0.23/m
BSC-EC-35	7 X 2.52	35	50m	0.31/m
BSC-EC-50	19 X 1.78	50	50m	0.46/m
BSC-EC-70	7 X 2.52	70	50m	0.62/m
BSC-EC-95	19 X 2.52	95	50m	0.85/m
BSC-EC-120	37 X 2.00	120	50m	1.03/m
BSC-EC-150	37 X 2.25	150	50m	1.33/m
BSC-EC-185	37 X 2.50	185	50m	1.61/m
BSC-EC-400	-	400	50m	-



WITH GREEN / YELLOW INSULATION

Meets (IC-EC) CEI 1024-1 Meets (IC-ECH) BS6004/6491X/AS1746

ORDERING INFORMATION

Reference code	Strand Description	Section mm ²	Packing	Unit weight kg.
Soft Drawn Copper Conductor				
BIC-EC-25	204 X 0.395	25	50m	0.27/m
BIC-EC-35	286 X 0.395	35	50m	0.37/m
BIC-EC-50	408 X 0.395	50	50m	0.53/m
Hard Drawn Copper Conductor				
BIC-ECH-16	7 X 1.60	16	50m	-
BIC-ECH-25	7 X 2.14	25	50m	0.26/m
BIC-ECH-35	7 X 2.52	35	50m	0.36/m
BIC-ECH-50	19 X 1.78	50	50m	0.52/m
BIC-ECH-70	19 X 2.14	70	50m	0.72/m
BIC-ECH-95	37 X 2.52	95	50m	0.98/m
BIC-ECH-120	37 X 2.03	120	50m	1.16/m
BIC-ECH-150	37 X 2.25	150	50m	1.61/m
BIC-ECH-185	37 X 2.52	185	50m	2.10/m
BIC-ECH-240	61 X 2.25	240	50m	2.50/m
BIC-ECH-300	61 X 2.52	300	50m	3.13/m



EARTHING SYSTEM



BARE COPPER TAPE

Meets BS1432 C101/AS1567/NFC17-100/NFC17-102/CEI1024-1

ORDERING INFORMATION

Reference code	Width mm	Thick mm	Packing	Unit weight kg.
BTC-EC-1215	12	1.5	30m	0.17/m
BTC-EC-1230	12	3.0	30m	0.33/m
BTC-EC-12515	12.5	1.5	100m	0.17/m
BTC-EC-12530	12.5	3.0	100m	0.33/m
BTC-EC-2015	20	1.5	30m	0.27/m
BTC-EC-2025	20	2.5	30m	0.45/m
BTC-EC-2030	20	3.0	30m	0.53/m
BTC-EC-2515	25	1.5	30m	0.33/m
BTC-EC-2530-50	25	3.0	50m	0.67/m
BTC-EC-2540	25	4.0	30m	0.89/m
BTC-EC-2560	25	6.0	30m	1.33/m
BTC-EC-302-30	30	2.0	30m	0.53/m
BTC-EC-3030	30	3.0	50m	0.80/m
BTC-EC-3040	30	4.0	40m	1.07/m
BTC-EC-3050	30	5.0	40m	1.33/m
BTC-EC-3130	31	3.0	30m	0.83/m
BTC-EC-3160	31	6.0	30m	1.65/m
BTC-EC-31540	31.5	4.0	40m	1.13/m
BTC-EC-3830	38	3.0	30m	1.02/m
BTC-EC-3850	38	5.0	30m	1.69/m
BTC-EC-3860	38	6.0	30m	2.03/m
BTC-EC-4030	40	3.0	50m	1.06/m
BTC-EC-4040	40	4.0	30m	2.03/m
BTC-EC-4050	40	5.0	25m	1.78/m
BTC-EC-4060	40	6.0	30m	2.12/m
BTC-EC-4063	40	6.3	25m	2.24/m
BTC-EC-5030	50	3.0	30m	1.33/m
BTC-EC-5040	50	4.0	30m	1.77/m
BTC-EC-5050	50	5.0	20m	2.22/m
BTC-EC-5060-50	50	6.0	20m	2.66/m
BTC-EC-5063	50	6.3	20m	2.80/m

COATED COPPER TAPE CONDUCTOR

Meets BS1432 C101/BS6746/AS1567/NFC17100/NFC 17102

TINNED COPPER TAPE

ORDERING INFORMATION

Reference code	Width mm	Thick mm	Packing	Unit weight kg.
BTC-ECT-12515	12.5	1.5	30m	-
BTC-ECT-202	20	2.0	30m	0.36/m
BTC-ECT-253	25	3.0	30m	0.67/m
BTC-ECT-2560	25	6.0	30m	1.33/m
BTC-ECT-302	30	2.0	30m	0.53/m
BTC-ECT-302-75	30	2.0	75m	0.53/m
BTC-ECT-313	31	3.0	50m	0.83/m
BTC-ECT-385	38	5.0	30m	1.69/m
BTC-ECT-506	50	6.0	20m	2.68/m

EARTHING SYSTEM



PVC COVERED COPPER TAPE

Meets BS1432C101/BS6746/AS 1567

ORDERING INFORMATION

Reference code	Colour	Dimensions mm x mm	Packing	Unit weight kg.
BCTBL12515	Black	12.5 X 1.5	100m	0.21/m
BCTBL253	Black	25 X 3.0	50m	0.77/m
BCTBN253	Brown	25 X 3.0	50m	0.77/m
BCTGN253	Green	25 X 3.0	50m	0.77/m
BCTGY253	Grey	25 X 3.0	50m	0.77/m
BCTST253	Stone	25 X 3.0	50m	0.77/m
BCTWH253	White	25 X 3.0	50m	0.77/m
BCTYGN253	Green/Yell.	25 X 3.0	50m	0.77/m
BCTGN256	Green	25 X 6.0	30m	1.55/m
BCTGN506	Green	50 X 6.0	30m	2.95/m

LSF COVERED COPPER TAPE

Meets Bs1432 C101/B56746/AS 1567

ORDERING INFORMATION

Reference code	Colour	Dimensions mm x mm	Packing	Unit weight kg.
BLSF-253	Green	25 X 3.0	50m	0.77/m
BLSF-256	Green	25 X 6.0	40m	1.53/m
BLSF-506	Green	50 X 6.0	20m	2.95/m

LEAD COVERED COPPER TAPE

Meets Bs1432 C101

ORDERING INFORMATION

Reference code	Width mm	Thick mm	Packing	Unit weight kg.
BLCT-253	25	3.0	50m	0.77/m

PLAIN COPPER BARS

Meets BS1433/BS2874 C101

ORDERING INFORMATION

Reference code	Dimensions mm	Packing	Unit weight kg.
BHDB2003	20 X 3	1	0.53/m
BHDB2503	25 X 3	1	0.67/m
BHDB2506	25 X 6	1	1.33/m
BHDB3806	38 X 6	1	2.03/m
BHDB5006	50 X 6	1	2.67/m
BHDB5010	50 X 10	5	4.45/m
BHDB7560	75 X 6	1	4.00/m
BHDB10060	100 X 6	1	5.38/m

TINNED COPPER BAR

Meets BS1433/BS2874 C101

ORDERING INFORMATION

Reference code	Dimensions mm	Packing	Unit weight kg.
BTHDB5060	50 X 6	1	2.67/m

EARTHING SYSTEM



SOLID ROUND CONDUCTOR

Meets BS1432 C101/AS1567/NFC17100/NFC 17102

BARE SOLID ROUND CONDUCTOR

ORDERING INFORMATION

Reference code	Conductor material	Ø (D) mm	Cross Section	Packing	Unit weight kg.
BRC-EC-6	Copper	6	28.3	100m	0.25/m
BRC-EC-8	Copper	8	50.3	100m	0.45/m
BRC-EC-8-3	Copper	8	50.3	30m	0.45/m
BRC-A-8	Aluminium	8	50.3	100m	0.12/m

TINNED SOLID COPPER ROUND CONDUCTOR

Meets BS1432 C101/AS1567/NFC 17100/NFC 17102

ORDERING INFORMATION

Reference code	Ø (D) mm	Cross Section	Packing	Unit weight kg.
BRC-ET-6	6	28.3	100m	0.25/m
BRC-ET-8	8	50.3	100m	0.45/m

PVC COVERED SOLID ROUND CONDUCTOR Ø 8 mm

Meets BS1432 C101/BS6746/AS1567

ORDERING INFORMATION

Reference code	Conductor Material	Cross Section	Packing	Unit weight kg.
BSC - C*	Copper	50.3	50m	0.49/m
BSC - A*	Aluminium	50.3	50m	0.12/m

* Colours available in White, Black, Brown, Grey, Stone

COPPER PLATES AND LATTICES / GRIDS

Meets BS1432 C101

COPPER PLATES

ORDERING INFORMATION

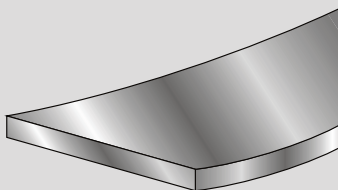
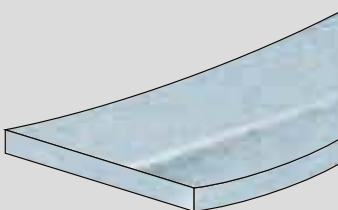
Reference code	Dimensions mm	Packing	Unit weight kg.
PC1.5-0606	600 X 600 X1.5	1	5.000
PC3-0606	600 X 600 X3.0	1	9.600
PC1.5-0909	900 X 900 X1.5	1	11.510
PC2-1020	1000 X 2000 X 2	1	35.600
PC3-0909	900 X 900 X3	1	21.630

COPPER LATTICES AND GRIDS

ORDERING INFORMATION

Reference code	Dimensions mm	Packing	Unit weight kg.
EML663	600 X 600 X 3	1	3.980
EML993	900 X 900 X 3	1	7.200
WM3-2088-B	8800 X 2000 X 3	1	54.000
WM2-1030-B	3000 X 1000 X 2	1	5.000
WM3-1020-B	2000 X 1000 X 3	1	5.400
WM2-1020-B	2000 X 1000 X 2	1	4.000
... Galvanized steel			
WMS-1030-B	3000 X 1000 X 3	1	8.700

EARTHING SYSTEM



BARE ALUMINIUM TAPE

Meets BS2898/1350/AS1866

ORDERING INFORMATION

Reference code	Width mm	Thick mm	Packing kg.	Unit weight
BBAT-12515	12.5	1.5	50m	0.05/m
BBAT-2030	20	3	50m	0.16/m
BBAT-253-50	25	3	50m	0.21/m
BBAT-2560	25	6	50m	0.41/m
BBAT-3030	30	3	50m	0.25/m
BBAT-4060	40	6	50m	0.67/m
BBAT-5060	50	6	50m	0.81/m

PVC COVERED ALUMINIUM TAPE

Meets BS2898/1350/AS1866

ORDERING INFORMATION

Reference code	Width mm	Thick	Colour	Packing weight kg.	Unit
BATBL12515	12.5	1.5	Black	50m	0.09/m
BATBL203	20	3	Black	50m	0.25/m
BATBL253	25	3	Black	50m	0.30/m
BATBN253	25	3	Brown	50m	0.30/m
BATGY253	25	3	Grey	50m	0.30/m
BATST253	25	3	Stone	50m	0.30/m
BATWH253	25	3	White	50m	0.30/m
BATGR253	25	3	Green	50m	0.30/m

BARE GALVANISED STEEL TAPE

Meets DIN 48801 / NFC 17100/NFC 17102

ORDERING INFORMATION

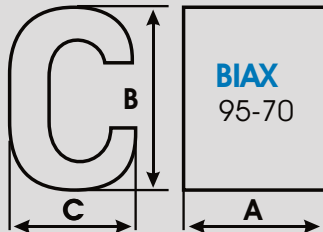
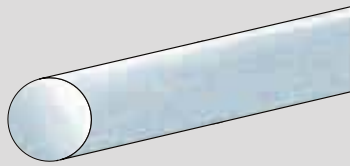
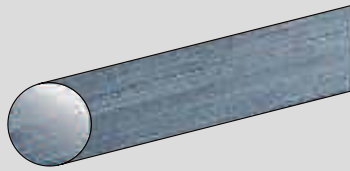
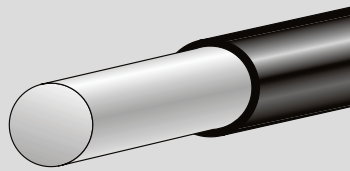
Reference code	Width mm	Thick mm	Packing kg.	Unit weight
B30TC-HGSP-3035	30	3.5	30m	0.82/m
B70TC-HGSP-3035	30	3.5	70m	0.82/m

BLACK STEEL TAPE

ORDERING INFORMATION

Reference code	Cross-Section mm ²	Dimension mm	Packing	Unit weight kg.
BTC-BR-253	75	25 x 3	30m	0.590/m

EARTHING SYSTEM



PVC COVERED ALUMINIUM ROUND CONDUCTOR

Meets BS2898/1350/AS1866

ORDERING INFORMATION

Reference code	Cross Sect. mm ²	D Ø mm	Colour	Packing	Unit weight kg.
BSABL	50.3	8	Black	50m	0.18/m
BSABN	50.3	8	Brown	50m	0.18/m
BSAGY	50.3	8	Grey	50m	0.18/m
BSAST	50.3	8	Stone	50m	0.18/m

BARE ALUMINIUM ROUND CONDUCTOR

Meets BS2898/1350/AS1866

ORDERING INFORMATION

Reference code	Cross-Section mm ²	D Ø mm	Packing	Unit weight kg.
BRAW-8	50.3	8	300m	0.14/m
BASCO8	50.3	8	50m	0.14/m

BARE GALVANISED ROUND CONDUCTOR

Meets NFC 17100/NFC 17102

ORDERING INFORMATION

Reference code	Cross Section mm ²	D Ø mm	Packing	Unit weight kg.
BRSCC-8	50.3	8	100m	0.400/m
BRSCC-10	78.5	10	100m	0.630/m

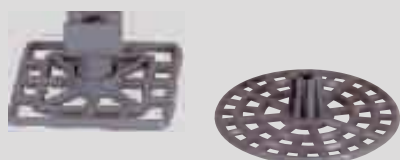
COPPER / TINNED COPPER 'C' TYPE CONNECTORS

MATERIAL : E-COPPER FINISH : ELECTRO TINNED

ORDERING INFORMATION

Reference code	Cable (mm ²)	Dimension (mm ²)		
		A	B	C
BCC 6-6	C6 - C6	9	9.8	6.4
BCC 10-10	C10 - C10	12	12.6	8.4
BCC 16-16	C16 - C16	17	19.4	12.0
BCC 25-10	C25 - C10	17	19.8	13.0
BCC 25-25	C25 - C25	17	21.4	13.0
BCC 35-16	C35 - C16	21	24.6	15.4
BCC 35-35	C35 - C35	21	26.6	15.6
BCC 70-25	C70 - C25	21	26.4	17.5
BCC 50-25	C50 - C25	25	32.9	21.0
BCC 50-50	C50 - C50	26	38.0	21.0
BCC 70-35	C70 - C35	28	33.0	21.0
BCC 70-70	C70 - C70	28	34.0	21.0
BCC 95-35	C95 - C35	29	40.6	26.0
BCC 95-70	C95 - C70	29	41.0	26.0
BCC 95-95	C95 - C95	29	41.0	26.0
BCC 120-120	C120 - C120	30	45.0	28.0
BCC 150-120	C150 - C120	31	45.0	28.0
BCC 185-95	C185 - C95	31	45.0	28.0

EARTHING SYSTEM



PLASTIC SUPPORT BLOCK

Meets NFC 17100/NFC 17102

ORDERING INFORMATION

Reference code	Packing	Unit weight kg.
... plastic max 8 mm diameter 30 x 2 tape		
BSFRR-SFT-45/6	10	0.014
BSFRR-SFT-45	10	0.028
BSFRR-SFT-65	10	0.029

PLASTIC SUPPORT FOR DOWNCONDUCTOR

Meets NFC 17100/NFC 17102

ORDERING INFORMATION

Reference code	Packing	Unit weight kg.
... plastic max 8 mm diameter 30 x 2mm tape		
BSFT-23-N	50	0.020
BSFTP-23-N	50	0.020
BR3SFT-25	50	0.037

BLOCKS FOR ROUND OR FLAT CONDUCTORS

Meets NFC 17100/NFC 17102

ORDERING INFORMATION

Reference code	Packing	Unit weight kg.
... 8 mm diameter 30 x 2 mm tape		
BSFR-BC-8	20	0.970
BSFT-BC	20	0.982

Flexible Copper Braid

ORDERING INFORMATION

Reference code	Overall nominal eq. per mm	Size mm ²	Unit weight Kg.
Bare Braid			
BBD020	12 x 1	6	0.055/m
BBD025	15 x 1.5	10	0.096/m
BBD026	19 x 2.5	16	0.16/m
BBD027	32 x 6	70	0.63/m
BBD030	25 x 3.5	34.7	0.34/m
Tinned Braid			
BBD035	25 x 3.5	35	0.34/m

Flexible Copper Braid Bond

ORDERING INFORMATION

Reference code	Overall Braid dim. mm	Hole Size mm	Hole Centres mm	Unit weight Kg.
BBN-505	25 x 3.5	11	200	0.055
BBN-510	25 x 3.5	11	400	0.096